



PRINCE SHRI VENKATESWARA ARTS AND SCIENCE COLLEGE

Gowrivakkam, Chennai-600073

Affiliated to University of Madras, ISO 9001:2015 Certified Institution

STUDENT FEEDBACK ON CURRICULUM, INFRASTRUCTURE FACILITIES & AMBIENCE OF THE INSTITUTION – ANALYSIS REPORT

Academic Year 2020-21
Department B.Sc. Biochemistry
Number of Respondents 34

Feedback Rate: Strongly Agree (5), Agree (4), Neutral (3), Disagree (2), Strongly Disagree (1)

S. No	Feedback on Curriculum, infrastructure facilities & ambience of the institution	5	4	3	2	1
1	Rate the courses in terms of their relevance to the latest and/ or future technologies and useful for employability (Related to Curriculum)	17	15	1	1	0
2	Rate the quality and relevance of the courses included in the curriculum (Related to Curriculum)	25	8	1	0	0
3	Rate the opportunity for students to participate in internship, contest, field visit, IPT and conference (Related to Curriculum)	22	10	2	0	0
4	Rate the quality of teaching and teacher's approach in the entire program (Related to Curriculum)	26	7	1	0	0
5	Rate the infrastructure of the classrooms for effective learning (Related to Curriculum)	22	12	0	0	0
6	Rate the usage of teaching aids and ICT in the class by faculty to facilitate teaching (Related to Curriculum)	21	10	2	0	1
7	Rate the opportunity for students to participate in extension activities (Related to Curriculum)	23	8	1	1	1

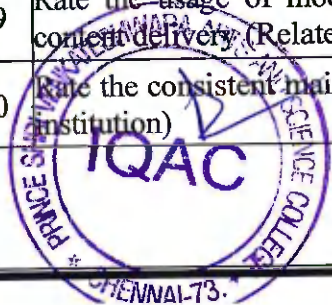


PRINCE SHRI VENKATESWARA ARTS AND SCIENCE COLLEGE

Gowrivakkam, Chennai-600073.

Affiliated to University of Madras, ISO 9001:2015 Certified Institution

8	Rate the opportunities provided to utilize Research facilities & assistance to prepare for Hackathons and other technical challenges (Related to Curriculum)	21	9	2	2	0
9	Rate the way of Grievances/problems are redressed and resolved in time. (Related to Curriculum)	21	8	3	1	1
10	Rate the functioning of Placement Cell in getting jobs and placements (Related to Curriculum)	22	11	1	0	0
11	Rate the transparency of the evaluation system in the College and the internal evaluation process by the teachers (Related to Assessment)	24	9	1	0	0
12	Rate the PSVASC contributions on Entrepreneurship Development (Related to Ambience)	23	8	2	1	0
13	Rate the learning environment with adequate resources in Library (Related to Infrastructure)	18	12	3	1	0
14	Rate the laboratories & other IT facilities are excellent for effective learning (Related to Infrastructure and ambience of the institution)	18	15	1	0	0
15	Rate the infrastructure, cleanliness and other facilities in campus / canteen / common room / toilets / washrooms and maintenance (Related to Infrastructure and ambience of the institution)	26	3	2	2	1
16	Rate the sports (Indoor/Outdoor) facilities available and its maintenance (Related to Infrastructure and ambience of the institution)	23	7	3	1	0
17	Rate the security and proctorial services in college for students. (Related to Infrastructure and ambience of the institution)	24	8	1	1	0
18	Rate the resources and practices for conservation of energy, water, etc. in the campus (Related to Infrastructure and ambience of the institution)	23	11	0	0	0
19	Rate the usage of modern teaching aids, Gadget, Smart class room and Web resources for content delivery. (Related to Infrastructure and ambience of the institution)	22	10	1	1	0
20	Rate the consistent maintenance of green campus (Related to Infrastructure and ambience of the institution)	23	9	1	1	0



B. Kalpana
PRINCIPAL
PRINCE SHRI VENKATESHWARA
ARTS AND SCIENCE COLLEGE
GOWRIVAKKAM, CHENNAI-600 073



PRINCE SHRI VENKATESWARA ARTS AND SCIENCE COLLEGE

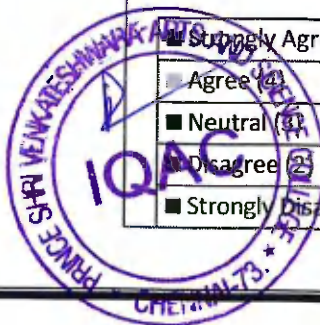
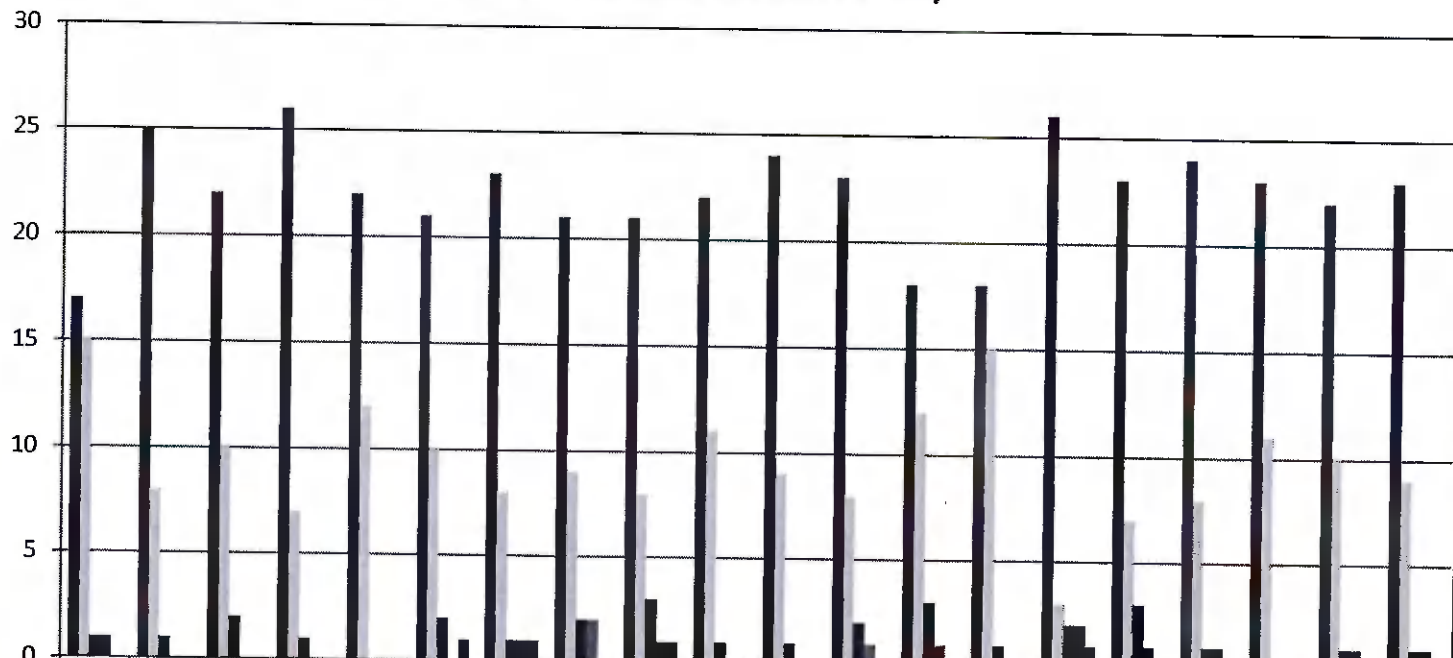
Gowrivakkam, Chennai-600073.

Affiliated to University of Madras, ISO 9001:2015 Certified Institution

STUDENT FEEDBACK ON CURRICULUM, INFRASTRUCTURE FACILITIES & AMBIENCE OF THE INSTITUTION - 2020-2021

B.Sc. BIOCHEMISTRY

(NUMBER OF RESPONDENTS - 34)



P. Kalpana
PRINCIPAL
 PRINCE SHRI VENKATESHWARA
 ARTS AND SCIENCE COLLEGE
 GOWRIVAKKAM, CHENNAI-600 073.



PRINCE SHRI VENKATESWARA ARTS AND SCIENCE COLLEGE

Gowrivakkam, Chennai-600073.

Affiliated to University of Madras, ISO 9001:2015 Certified Institution

STUDENT FEEDBACK ON CURRICULUM, INFRASTRUCTURE FACILITIES & AMBIENCE OF THE INSTITUTION – ANALYSIS REPORT

Academic Year

2020-21

Department

B.Sc.-Microbiology

Number of Respondents

84

Feedback Rate: Strongly Agree (5), Agree (4), Neutral (3), Disagree (2), Strongly Disagree (1)

S. No	Feedback on Curriculum, infrastructure facilities & ambience of the institution	5	4	3	2	1
1	Rate the courses in terms of their relevance to the latest and/ or future technologies and useful for employability (Related to Curriculum)	46	31	7	0	0
2	Rate the quality and relevance of the courses included in the curriculum (Related to Curriculum)	44	34	6	0	0
3	Rate the opportunity for students to participate in internship, contest, field visit, IPT and conference (Related to Curriculum)	46	30	7	1	0
4	Rate the quality of teaching and teacher's approach in the entire program (Related to Curriculum)	50	29	5	0	0
5	Rate the infrastructure of the classrooms for effective learning (Related to Curriculum)	46	32	6	0	0
6	Rate the usage of teaching aids and ICT in the class by faculty to facilitate teaching (Related to Curriculum)	47	30	7	0	0
7	Rate the opportunity for students to participate in extension activities (Related to Curriculum)	46	31	6	1	0
8	Rate the opportunities provided to utilize Research facilities & assistance to prepare for Hackathons and other technical challenges (Related to Curriculum)	49	28	7	0	0



PRINCE SHRI VENKATESWARA ARTS AND SCIENCE COLLEGE

Gowrivakkam, Chennai-600073.

Affiliated to University of Madras, ISO 9001:2015 Certified Institution

9	Rate the way of Grievances/problems are redressed and resolved in time. (Related to Curriculum)	52	27	4	1	0
10	Rate the functioning of Placement Cell in getting jobs and placements (Related to Curriculum)	54	25	5	0	0
11	Rate the transparency of the evaluation system in the College and the internal evaluation process by the teachers (Related to Assessment)	46	34	4	0	0
12	Rate the PSVASC contributions on Entrepreneurship Development (Related to Ambience)	45	32	7	0	0
13	Rate the learning environment with adequate resources in Library (Related to Infrastructure)	51	26	6	1	0
14	Rate the laboratories & other IT facilities are excellent for effective learning (Related to Infrastructure and ambience of the institution)	46	31	7	0	0
15	Rate the infrastructure, cleanliness and other facilities in campus / canteen / common room / toilets / washrooms and maintenance (Related to Infrastructure and ambience of the institution)	48	32	4	0	0
16	Rate the sports (Indoor/Outdoor) facilities available and its maintenance (Related to Infrastructure and ambience of the institution)	47	30	6	1	0
17	Rate the security and proctorial services in college for students. (Related to Infrastructure and ambience of the institution)	46	31	7	0	0
18	Rate the resources and practices for conservation of energy, water, etc. in the campus (Related to Infrastructure and ambience of the institution)	53	26	5	0	0
19	Rate the usage of modern teaching aids, Gadget, Smart class room and Web resources for content delivery (Related to Infrastructure and ambience of the institution)	49	30	5	0	0
20	Rate the consistent maintenance of green campus (Related to Infrastructure and ambience of the institution)	45	35	4	0	0



B. Kalpana
PRINCIPAL
PRINCE SHRI VENKATESHWARA
ARTS AND SCIENCE COLLEGE
GOWRIVAKKAM, CHENNAI-600 073.



PRINCE SHRI VENKATESWARA ARTS AND SCIENCE COLLEGE

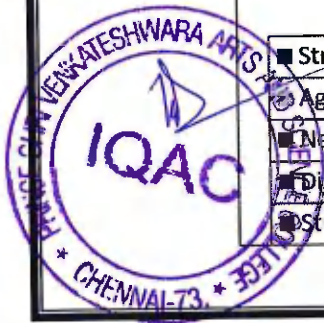
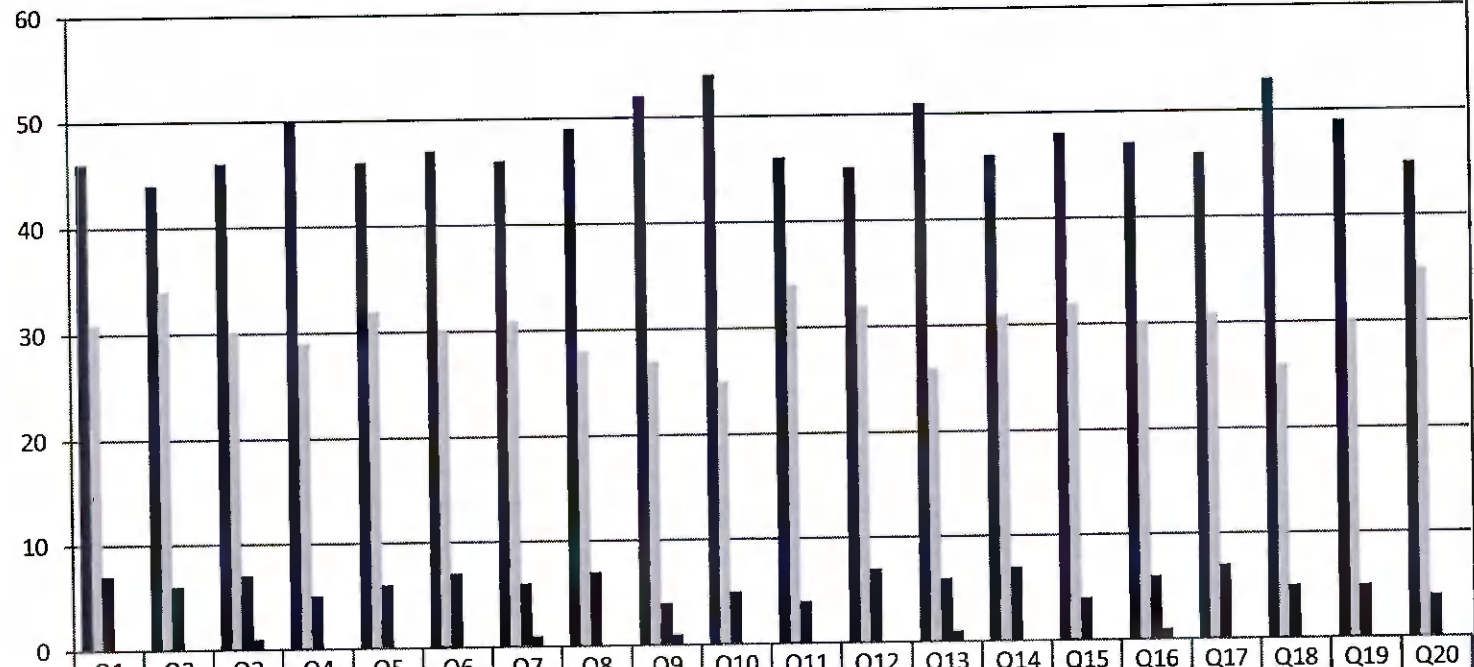
Gowrivakkam, Chennai-600073.

Affiliated to University of Madras, ISO 9001:2015 Certified Institution

STUDENT FEEDBACK ON CURRICULUM, INFRASTRUCTURE FACILITIES & AMBIENCE OF THE INSTITUTION - 2020-2021

B.Sc. MICROBIOLOGY

(NUMBER OF RESPONDENTS - 84)



PRINCE SHRI VENKATESHWARA
ARTS AND SCIENCE COLLEGE
 GOWRIVAKKAM, CHENNAI-600 073.



PRINCE SHRI VENKATESWARA ARTS AND SCIENCE COLLEGE

Gowrivakkam, Chennai-600073.

Affiliated to University of Madras, ISO 9001:2015 Certified Institution

STUDENT FEEDBACK ON CURRICULUM, INFRASTRUCTURE FACILITIES & AMBIENCE OF THE INSTITUTION – ANALYSIS REPORT

Academic Year

2020-21

Department

B.Sc. Electronics and Communication Science

Number of Respondents

18

Feedback Rate: Strongly Agree (5), Agree (4), Neutral (3), Disagree (2), Strongly Disagree (1)

S. No	Feedback on Curriculum, infrastructure facilities & ambience of the institution	5	4	3	2	1
1	Rate the courses in terms of their relevance to the latest and/ or future technologies and useful for employability (Related to Curriculum)	11	5	2	0	0
2	Rate the quality and relevance of the courses included in the curriculum (Related to Curriculum)	14	0	3	1	0
3	Rate the opportunity for students to participate in internship, contest, field visit, IPT and conference (Related to Curriculum)	13	4	1	0	0
4	Rate the quality of teaching and teacher's approach in the entire program (Related to Curriculum)	15	2	0	1	0
5	Rate the infrastructure of the classrooms for effective learning (Related to Curriculum)	14	3	1	0	0
6	Rate the usage of teaching aids and ICT in the class by faculty to facilitate teaching (Related to Curriculum)	16	1	1	0	0
7	Rate the opportunity for students to participate in extension activities (Related to Curriculum)	11	5	1	1	0
8	Rate the opportunities provided to utilize Research facilities & assistance to prepare for Hackathons and other technical challenges (Related to Curriculum)	12	4	2	0	0

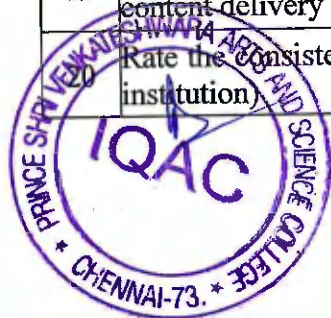


PRINCE SHRI VENKATESWARA ARTS AND SCIENCE COLLEGE

Gowrivakkam, Chennai-600073.

Affiliated to University of Madras, ISO 9001:2015 Certified Institution

9	Rate the way of Grievances/problems are redressed and resolved in time. (Related to Curriculum)	12	2	2	1	1
10	Rate the functioning of Placement Cell in getting jobs and placements (Related to Curriculum)	11	6	0	1	0
11	Rate the transparency of the evaluation system in the College and the internal evaluation process by the teachers (Related to Assessment)	12	6	0	0	0
12	Rate the PSVASC contributions on Entrepreneurship Development (Related to Ambience)	14	2	1	1	0
13	Rate the learning environment with adequate resources in Library (Related to Infrastructure)	16	1	1	0	0
14	Rate the laboratories & other IT facilities are excellent for effective learning (Related to Infrastructure and ambience of the institution)	15	2	1	0	0
15	Rate the infrastructure, cleanliness and other facilities in campus / canteen / common room / toilets / washrooms and maintenance (Related to Infrastructure and ambience of the institution)	16	1	0	1	0
16	Rate the sports (Indoor/Outdoor) facilities available and its maintenance (Related to Infrastructure and ambience of the institution)	15	2	0	1	0
17	Rate the security and proctorial services in college for students. (Related to Infrastructure and ambience of the institution)	13	2	2	1	0
18	Rate the resources and practices for conservation of energy, water, etc. in the campus (Related to Infrastructure and ambience of the institution)	16	1	0	1	0
19	Rate the usage of modern teaching aids, Gadget, Smart class room and Web resources for content delivery (Related to Infrastructure and ambience of the institution)	15	3	0	0	0
20	Rate the consistent maintenance of green campus (Related to Infrastructure and ambience of the institution)	18	0	0	0	0



B. Kalpana
PRINCIPAL
PRINCE SHRI VENKATESHWARA
ARTS AND SCIENCE COLLEGE
GOWRIVAKKAM, CHENNAI-600 073



PRINCE SHRI VENKATESWARA ARTS AND SCIENCE COLLEGE

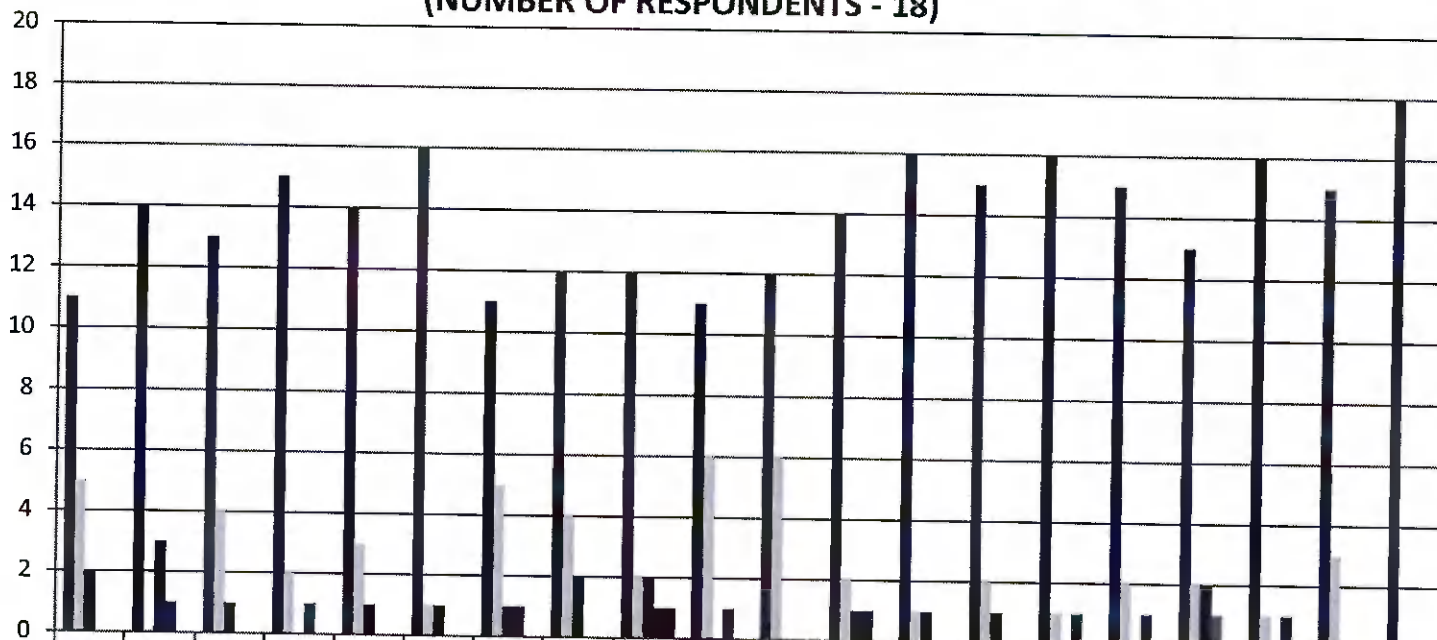
Gowrivakkam, Chennai-600073.

Affiliated to University of Madras, ISO 9001:2015 Certified Institution

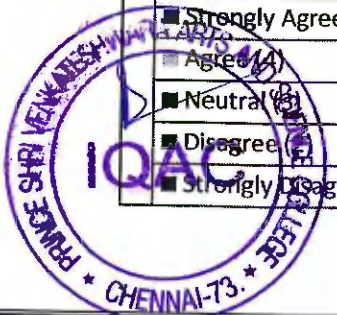
STUDENT FEEDBACK ON CURRICULUM, INFRASTRUCTURE FACILITIES & AMBIENCE OF THE INSTITUTION - 2020-2021

B.Sc. ELECTRONICS AND COMMUNICATION SCIENCE

(NUMBER OF RESPONDENTS - 18)



	Q1	Q2	Q3	Q4	Q5	Q6	Q7	Q8	Q9	Q10	Q11	Q12	Q13	Q14	Q15	Q16	Q17	Q18	Q19	Q20
Strongly Agree (5)	11	14	13	15	14	16	11	12	12	11	12	14	16	15	16	15	13	16	15	18
Agree (4)	5	0	4	2	3	1	5	4	2	6	6	2	1	2	1	2	2	1	3	0
Neutral (3)	2	3	1	0	1	1	1	2	2	0	0	1	1	1	0	0	2	0	0	0
Disagree (2)	0	1	0	1	0	0	1	0	1	1	0	1	0	0	1	1	1	1	0	0
Strongly Disagree (1)	0	0	0	0	0	0	0	0	1	0	0	0	0	0	0	0	0	0	0	0



B. Kalpana
PRINCIPAL
 PRINCE SHRI VENKATESHWARA
 ARTS AND SCIENCE COLLEGE
 GOWRIVAKKAM, CHENNAI-600 073.



PRINCE SHRI VENKATESWARA ARTS AND SCIENCE COLLEGE

Gowrivakkam, Chennai-600073

Affiliated to University of Madras, ISO 9001:2015 Certified Institution

STUDENT FEEDBACK ON CURRICULUM, INFRASTRUCTURE FACILITIES & AMBIENCE OF THE INSTITUTION – ANALYSIS REPORT

Academic Year

2020-21

Department

B.Sc.-Computer Science

Number of Respondents

202

Feedback Rate: Strongly Agree (5), Agree (4), Neutral (3), Disagree (2), Strongly Disagree (1)

S. No	Feedback on Curriculum, infrastructure facilities & ambience of the institution	5	4	3	2	1
1	Rate the courses in terms of their relevance to the latest and/ or future technologies and useful for employability (Related to Curriculum)	96	82	24	0	0
2	Rate the quality and relevance of the courses included in the curriculum (Related to Curriculum)	101	78	22	1	0
3	Rate the opportunity for students to participate in internship, contest, field visit, IPT and conference (Related to Curriculum)	112	71	18	1	0
4	Rate the quality of teaching and teacher's approach in the entire program (Related to Curriculum)	119	68	15	0	0
5	Rate the infrastructure of the classrooms for effective learning (Related to Curriculum)	98	89	14	1	0
6	Rate the usage of teaching aids and ICT in the class by faculty to facilitate teaching (Related to Curriculum)	112	74	16	0	0
7	Rate the opportunity for students to participate in extension activities (Related to Curriculum)	107	81	13	1	0
8	Rate the opportunities provided to utilize Research facilities & assistance to prepare for Hackathons and other technical challenges (Related to Curriculum)	114	73	15	0	0



PRINCE SHRI VENKATESWARA ARTS AND SCIENCE COLLEGE

Gowrivakkam, Chennai-600073.

Affiliated to University of Madras, ISO 9001:2015 Certified Institution

9	Rate the way of Grievances/problems are redressed and resolved in time. (Related to Curriculum)	113	69	19	1	0
10	Rate the functioning of Placement Cell in getting jobs and placements (Related to Curriculum)	116	65	20	1	0
11	Rate the transparency of the evaluation system in the College and the internal evaluation process by the teachers (Related to Assessment)	133	49	20	0	0
12	Rate the PSVASC contributions on Entrepreneurship Development (Related to Ambience)	123	62	16	1	0
13	Rate the learning environment with adequate resources in Library (Related to Infrastructure)	119	68	14	1	0
14	Rate the laboratories & other IT facilities are excellent for effective learning (Related to Infrastructure and ambience of the institution)	117	64	20	1	0
15	Rate the infrastructure, cleanliness and other facilities in campus / canteen / common room / toilets / washrooms and maintenance (Related to Infrastructure and ambience of the institution)	105	81	15	1	0
16	Rate the sports (Indoor/Outdoor) facilities available and its maintenance (Related to Infrastructure and ambience of the institution)	115	71	16	0	0
17	Rate the security and proctorial services in college for students. (Related to Infrastructure and ambience of the institution)	118	68	15	1	0
18	Rate the resources and practices for conservation of energy, water, etc. in the campus (Related to Infrastructure and ambience of the institution)	116	63	22	1	0
19	Rate the usage of modern teaching aids, Gadget, Smart class room and Web resources for content delivery (Related to Infrastructure and ambience of the institution)	140	45	17	0	0
20	Rate the consistent maintenance of green campus (Related to Infrastructure and ambience of the institution)	113	75	14	0	0



B. Kalpana
PRINCIPAL
PRINCE SHRI VENKATESHWARA
ARTS AND SCIENCE COLLEGE
GOWRIVAKKAM, CHENNAI-600 073.



PRINCE SHRI VENKATESWARA ARTS AND SCIENCE COLLEGE

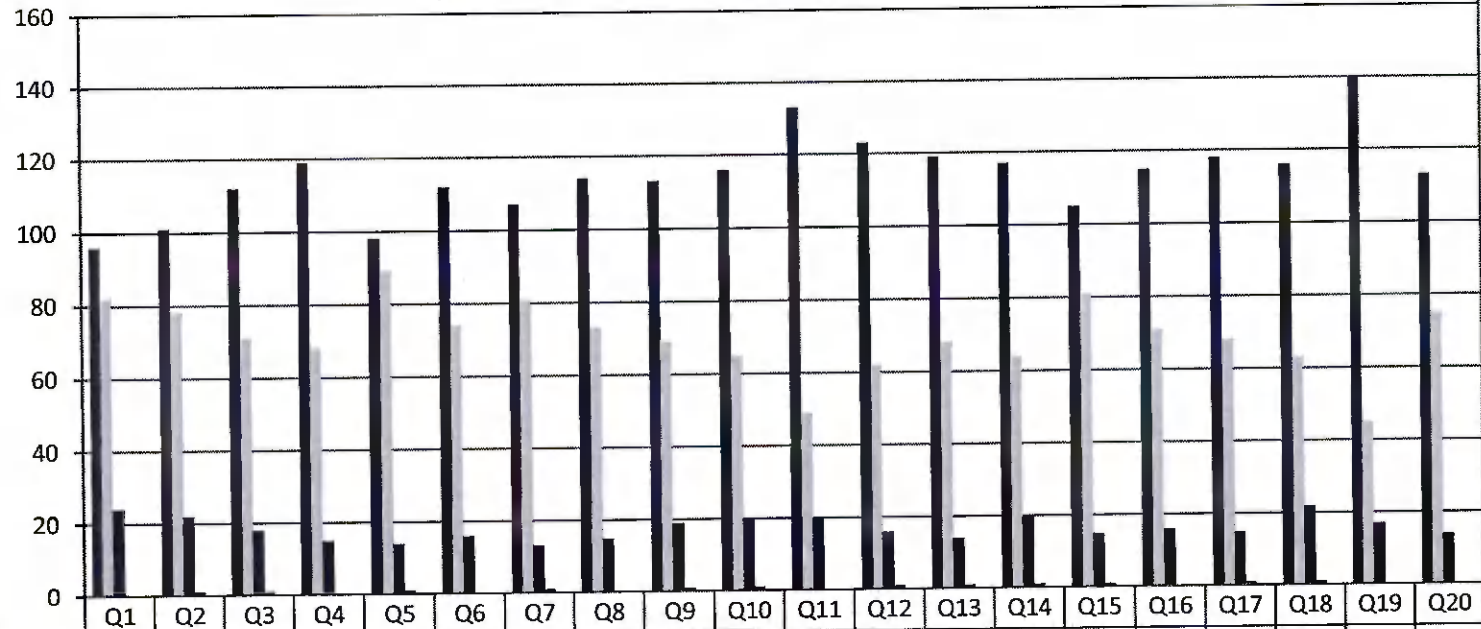
Gowrivakkam, Chennai-600073.

Affiliated to University of Madras, ISO 9001:2015 Certified Institution

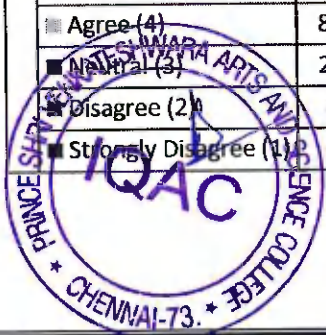
STUDENT FEEDBACK ON CURRICULUM, INFRASTRUCTURE FACILITIES & AMBIENCE OF THE INSTITUTION - 2020-2021

B.Sc. COMPUTER SCIENCE

(NUMBER OF RESPONDENTS - 202)



	Q1	Q2	Q3	Q4	Q5	Q6	Q7	Q8	Q9	Q10	Q11	Q12	Q13	Q14	Q15	Q16	Q17	Q18	Q19	Q20
Strongly Agree (5)	96	101	112	119	98	112	107	114	113	116	133	123	119	117	105	115	118	116	140	113
Agree (4)	82	78	71	68	89	74	81	73	69	65	49	62	68	64	81	71	68	63	45	75
Neutral (3)	24	22	18	15	14	16	13	15	19	20	20	16	14	20	15	16	15	22	17	14
Disagree (2)	0	1	1	0	1	0	1	0	1	1	0	1	1	1	1	0	1	1	0	0
Strongly Disagree (1)	0	0	0	0	0	0	0	0	0	0	0	0	0	0	0	0	0	0	0	0



B. Kalpana
PRINCIPAL
 PRINCE SHRI VENKATESHWARA
 ARTS AND SCIENCE COLLEGE
 GOWRIVAKKAM, CHENNAI-600 073



PRINCE SHRI VENKATESWARA ARTS AND SCIENCE COLLEGE

Gowrivakkam, Chennai-600073.

Affiliated to University of Madras, ISO 9001:2015 Certified Institution

STUDENT FEEDBACK ON CURRICULUM, INFRASTRUCTURE FACILITIES & AMBIENCE OF THE INSTITUTION – ANALYSIS REPORT

Academic Year 2020-21
Department B. Com-General
Number of Respondents 341

Feedback Rate: Strongly Agree (5), Agree (4), Neutral (3), Disagree (2), Strongly Disagree (1)

S. No	Feedback on Curriculum, infrastructure facilities & ambience of the institution	5	4	3	2	1
1	Rate the courses in terms of their relevance to the latest and/ or future technologies and useful for employability (Related to Curriculum)	210	122	9	0	0
2	Rate the quality and relevance of the courses included in the curriculum (Related to Curriculum)	208	123	10	0	0
3	Rate the opportunity for students to participate in internship, contest, field visit, IPT and conference (Related to Curriculum)	206	125	10	0	0
4	Rate the quality of teaching and teacher's approach in the entire program (Related to Curriculum)	211	120	10	0	0
5	Rate the infrastructure of the classrooms for effective learning (Related to Curriculum)	213	119	9	0	0
6	Rate the usage of teaching aids and ICT in the class by faculty to facilitate teaching (Related to Curriculum)	208	123	10	0	0
7	Rate the opportunity for students to participate in extension activities (Related to Curriculum)	212	117	11	1	0
8	Rate the opportunities provided to utilize Research facilities & assistance to prepare for Hackathons and other technical challenges (Related to Curriculum)	210	120	11	0	0

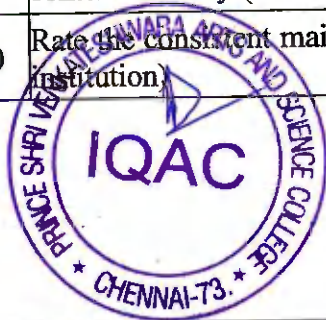


PRINCE SHRI VENKATESWARA ARTS AND SCIENCE COLLEGE

Gowrivakkam, Chennai-600073.

Affiliated to University of Madras, ISO 9001:2015 Certified Institution

9	Rate the way of Grievances/problems are redressed and resolved in time. (Related to Curriculum)	208	121	12	0	0
10	Rate the functioning of Placement Cell in getting jobs and placements (Related to Curriculum)	210	120	11	0	0
11	Rate the transparency of the evaluation system in the College and the internal evaluation process by the teachers (Related to Assessment)	210	120	11	0	0
12	Rate the PSVASC contributions on Entrepreneurship Development (Related to Ambience)	209	122	10	0	0
13	Rate the learning environment with adequate resources in Library (Related to Infrastructure)	208	122	9	1	1
14	Rate the laboratories & other IT facilities are excellent for effective learning (Related to Infrastructure and ambience of the institution)	211	121	8	1	0
15	Rate the infrastructure, cleanliness and other facilities in campus / canteen / common room / toilets / washrooms and maintenance (Related to Infrastructure and ambience of the institution)	211	119	11	0	0
16	Rate the sports (Indoor/Outdoor) facilities available and its maintenance (Related to Infrastructure and ambience of the institution)	212	117	10	1	1
17	Rate the security and proctorial services in college for students. (Related to Infrastructure and ambience of the institution)	208	124	9	0	0
18	Rate the resources and practices for conservation of energy, water, etc. in the campus (Related to Infrastructure and ambience of the institution)	211	118	12	0	0
19	Rate the usage of modern teaching aids, Gadget, Smart class room and Web resources for content delivery (Related to Infrastructure and ambience of the institution)	206	124	10	1	0
20	Rate the consistent maintenance of green campus (Related to Infrastructure and ambience of the institution)	211	121	9	0	0



B. Kalpana
PRINCIPAL
PRINCE SHRI VENKATESHWARA
ARTS AND SCIENCE COLLEGE
GOWRIVAKKAM, CHENNAI-600 073.



PRINCE SHRI VENKATESWARA ARTS AND SCIENCE COLLEGE

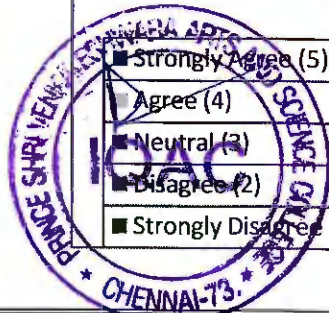
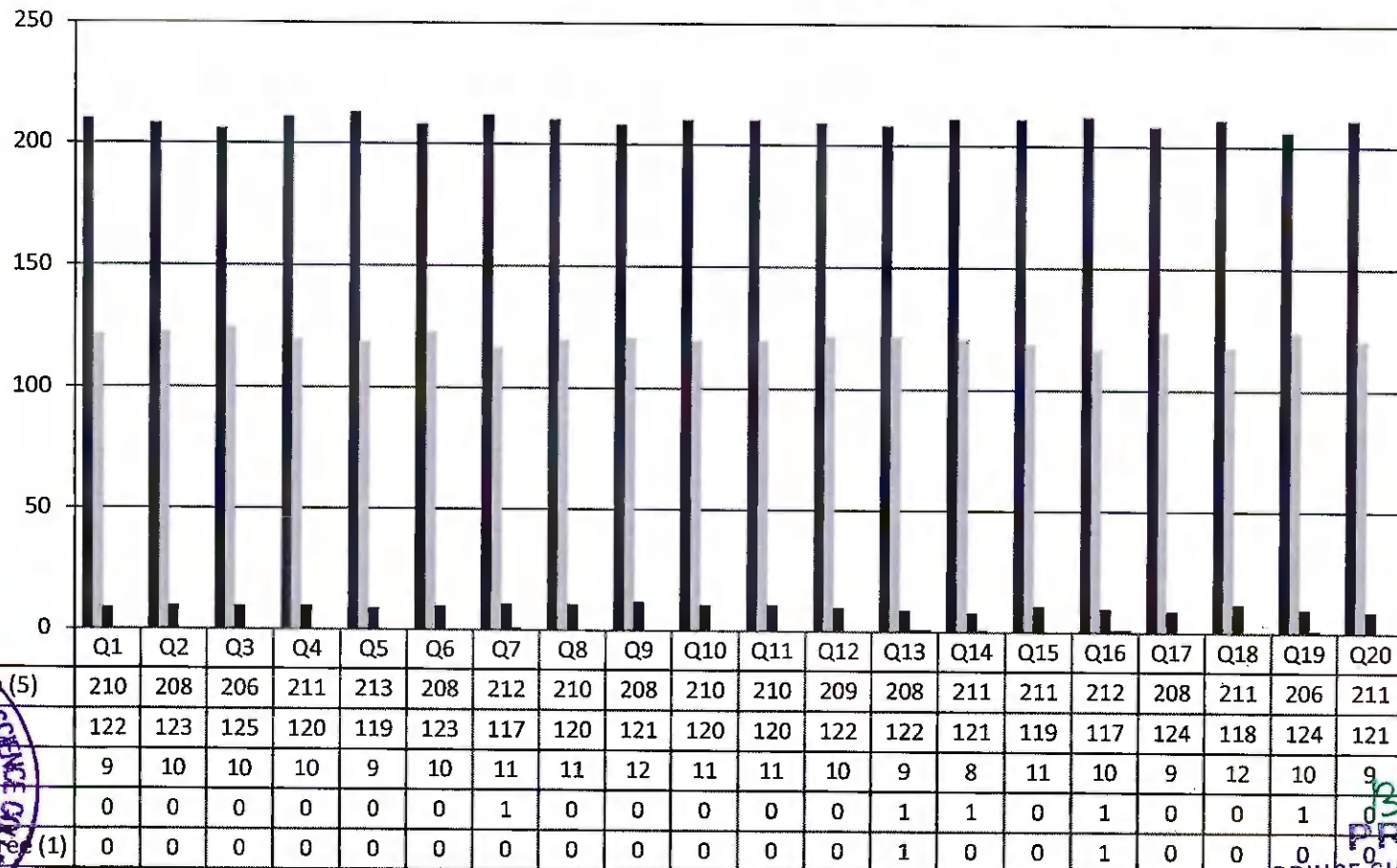
Gowrivakkam, Chennai-600073.

Affiliated to University of Madras, ISO 9001:2015 Certified Institution

STUDENT FEEDBACK ON CURRICULUM, INFRASTRUCTURE FACILITIES & AMBIENCE OF THE INSTITUTION - 2020-2021

B.COM (GENERAL)

(NUMBER OF RESPONDENTS - 341)



B. Calpane
PRINCIPAL
 PRINCE SHRI VENKATESHWARA
 ARTS AND SCIENCE COLLEGE
 GOWRIVAKKAM, CHENNAI 600 073.

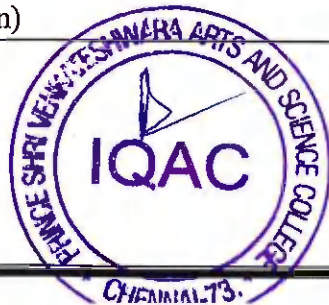


PRINCE SHRI VENKATESWARA ARTS AND SCIENCE COLLEGE

Gowrivakkam, Chennai-600073.

Affiliated to University of Madras, ISO 9001:2015 Certified Institution

9	Rate the way of Grievances/problems are redressed and resolved in time. (Related to Curriculum)	162	122	10	1	1
10	Rate the functioning of Placement Cell in getting jobs and placements (Related to Curriculum)	161	124	10	1	0
11	Rate the transparency of the evaluation system in the College and the internal evaluation process by the teachers (Related to Assessment)	160	125	11	0	0
12	Rate the PSVASC contributions on Entrepreneurship Development (Related to Ambience)	159	125	12	0	0
13	Rate the learning environment with adequate resources in Library (Related to Infrastructure)	157	127	11	1	0
14	Rate the laboratories & other IT facilities are excellent for effective learning (Related to Infrastructure and ambience of the institution)	163	122	10	1	0
15	Rate the infrastructure, cleanliness and other facilities in campus / canteen / common room / toilets / washrooms and maintenance (Related to Infrastructure and ambience of the institution)	162	125	9	0	0
16	Rate the sports (Indoor/Outdoor) facilities available and its maintenance (Related to Infrastructure and ambience of the institution)	159	126	10	1	0
17	Rate the security and proctorial services in college for students. (Related to Infrastructure and ambience of the institution)	162	124	9	1	0
18	Rate the resources and practices for conservation of energy, water, etc. in the campus (Related to Infrastructure and ambience of the institution)	160	125	11	0	0
19	Rate the usage of modern teaching aids, Gadget, Smart class room and Web resources for content delivery (Related to Infrastructure and ambience of the institution)	157	128	10	0	1
20	Rate the consistent maintenance of green campus (Related to Infrastructure and ambience of the institution)	161	126	9	0	0



B. Kalpana
PRINCIPAL
PRINCE SHRI VENKATESHWARA
ARTS AND SCIENCE COLLEGE
GOWRIVAKKAM, CHENNAI-600 073.



PRINCE SHRI VENKATESWARA ARTS AND SCIENCE COLLEGE

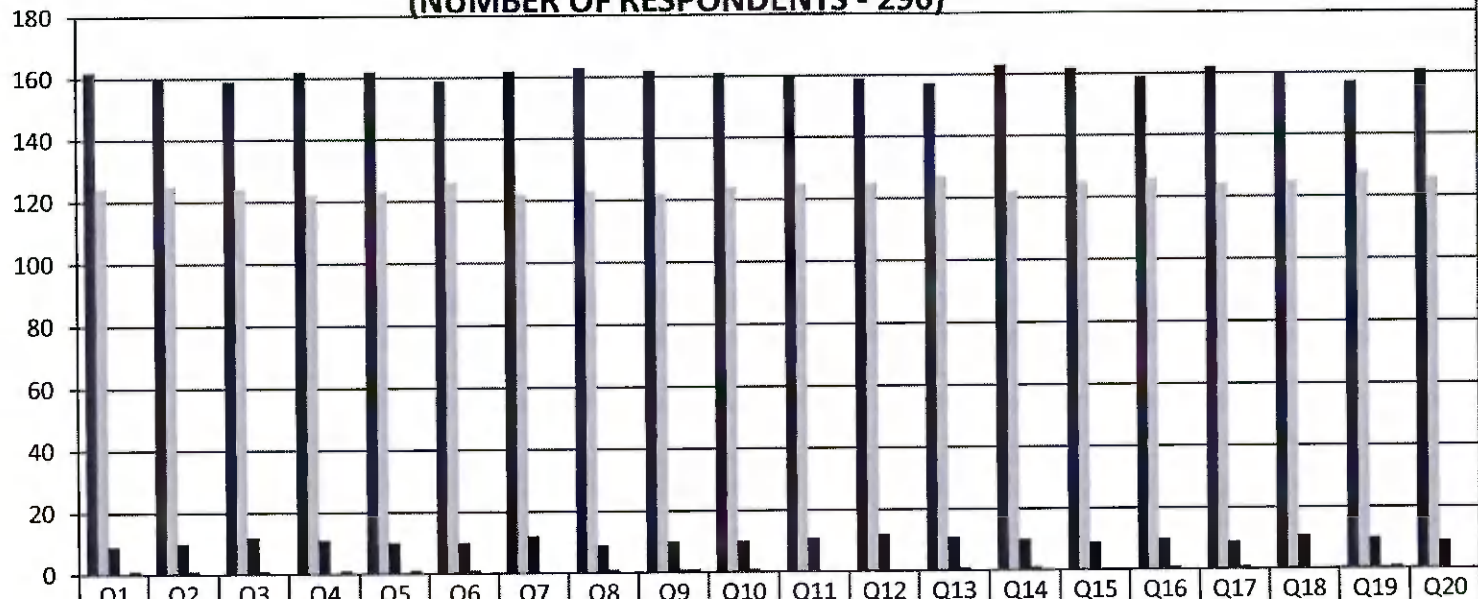
Gowrivakkam, Chennai-600073.

Affiliated to University of Madras, ISO 9001:2015 Certified Institution

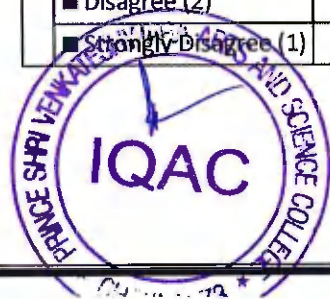
STUDENT FEEDBACK ON CURRICULUM, INFRASTRUCTURE FACILITIES & AMBIENCE OF THE INSTITUTION - 2020-2021

BCA

(NUMBER OF RESPONDENTS - 296)



Strongly Agree (5)	162	160	159	162	162	159	162	163	162	161	160	159	157	163	162	159	162	160	157	161
Agree (4)	124	125	124	122	123	126	122	123	122	124	125	125	127	122	125	126	124	125	128	126
Neutral (3)	9	10	12	11	10	10	12	9	10	10	11	12	11	10	9	10	9	11	10	9
Disagree (2)	0	1	1	0	0	1	0	1	1	1	0	0	1	1	0	1	1	0	0	0
Strongly Disagree (1)	1	0	0	1	1	0	0	0	1	0	0	0	0	0	0	0	0	0	1	0



B. Kalpana
PRINCIPAL
 PRINCE SHRI VENKATESHWARA
 ARTS AND SCIENCE COLLEGE
 GOWRIVAKKAM, CHENNAI-600 073



PRINCE SHRI VENKATESWARA ARTS AND SCIENCE COLLEGE

Gowrivakkam, Chennai-600073

Affiliated to University of Madras, ISO 9001:2015 Certified Institution

STUDENT FEEDBACK ON CURRICULUM, INFRASTRUCTURE FACILITIES & AMBIENCE OF THE INSTITUTION – ANALYSIS REPORT

Academic Year 2020-21
Department B.Sc.-Biotechnology
Number of Respondents 58

Feedback Rate: Strongly Agree (5), Agree (4), Neutral (3), Disagree (2), Strongly Disagree (1)

S. No	Feedback on Curriculum, infrastructure facilities & ambience of the institution	5	4	3	2	1
1	Rate the courses in terms of their relevance to the latest and/ or future technologies and useful for employability (Related to Curriculum)	35	21	2	0	0
2	Rate the quality and relevance of the courses included in the curriculum (Related to Curriculum)	34	21	3	0	0
3	Rate the opportunity for students to participate in internship, contest, field visit, IPT and conference (Related to Curriculum)	34	22	1	1	0
4	Rate the quality of teaching and teacher's approach in the entire program (Related to Curriculum)	37	17	3	0	1
5	Rate the infrastructure of the classrooms for effective learning (Related to Curriculum)	35	21	1	1	0
6	Rate the usage of teaching aids and ICT in the class by faculty to facilitate teaching (Related to Curriculum)	34	20	3	1	0
7	Rate the opportunity for students to participate in extension activities (Related to Curriculum)	34	23	1	0	0
8	Rate the opportunities provided to utilize Research facilities & assistance to prepare for Hackathons and other technical challenges (Related to Curriculum)	37	17	3	1	0

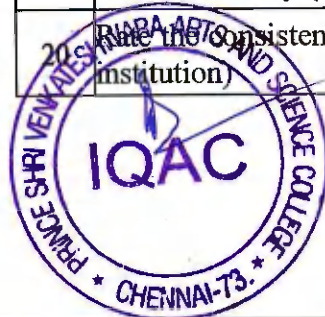


PRINCE SHRI VENKATESWARA ARTS AND SCIENCE COLLEGE

Gowrivakkam, Chennai-600073.

Affiliated to University of Madras, ISO 9001:2015 Certified Institution

9	Rate the way of Grievances/problems are redressed and resolved in time. (Related to Curriculum)	37	19	1	0	1
10	Rate the functioning of Placement Cell in getting jobs and placements (Related to Curriculum)	40	17	0	1	0
11	Rate the transparency of the evaluation system in the College and the internal evaluation process by the teachers (Related to Assessment)	38	19	0	1	0
12	Rate the PSVASC contributions on Entrepreneurship Development (Related to Ambience)	41	15	1	0	1
13	Rate the learning environment with adequate resources in Library (Related to Infrastructure)	34	23	0	1	0
14	Rate the laboratories & other IT facilities are excellent for effective learning (Related to Infrastructure and ambience of the institution)	37	20	1	0	0
15	Rate the infrastructure, cleanliness and other facilities in campus / canteen / common room / toilets / washrooms and maintenance (Related to Infrastructure and ambience of the institution)	32	23	2	1	0
16	Rate the sports (Indoor/Outdoor) facilities available and its maintenance (Related to Infrastructure and ambience of the institution)	32	24	1	0	1
17	Rate the security and proctorial services in college for students. (Related to Infrastructure and ambience of the institution)	36	22	0	0	0
18	Rate the resources and practices for conservation of energy, water, etc. in the campus (Related to Infrastructure and ambience of the institution)	36	20	1	1	0
19	Rate the usage of modern teaching aids, Gadget, Smart class room and Web resources for content delivery (Related to Infrastructure and ambience of the institution)	38	19	0	1	0
20	Rate the consistent maintenance of green campus (Related to Infrastructure and ambience of the institution)	37	21	0	0	0



B. Kalpana
PRINCIPAL
PRINCE SHRI VENKATESHWARA
ARTS AND SCIENCE COLLEGE
GOWRIVAKKAM, CHENNAI-600 073



PRINCE SHRI VENKATESWARA ARTS AND SCIENCE COLLEGE

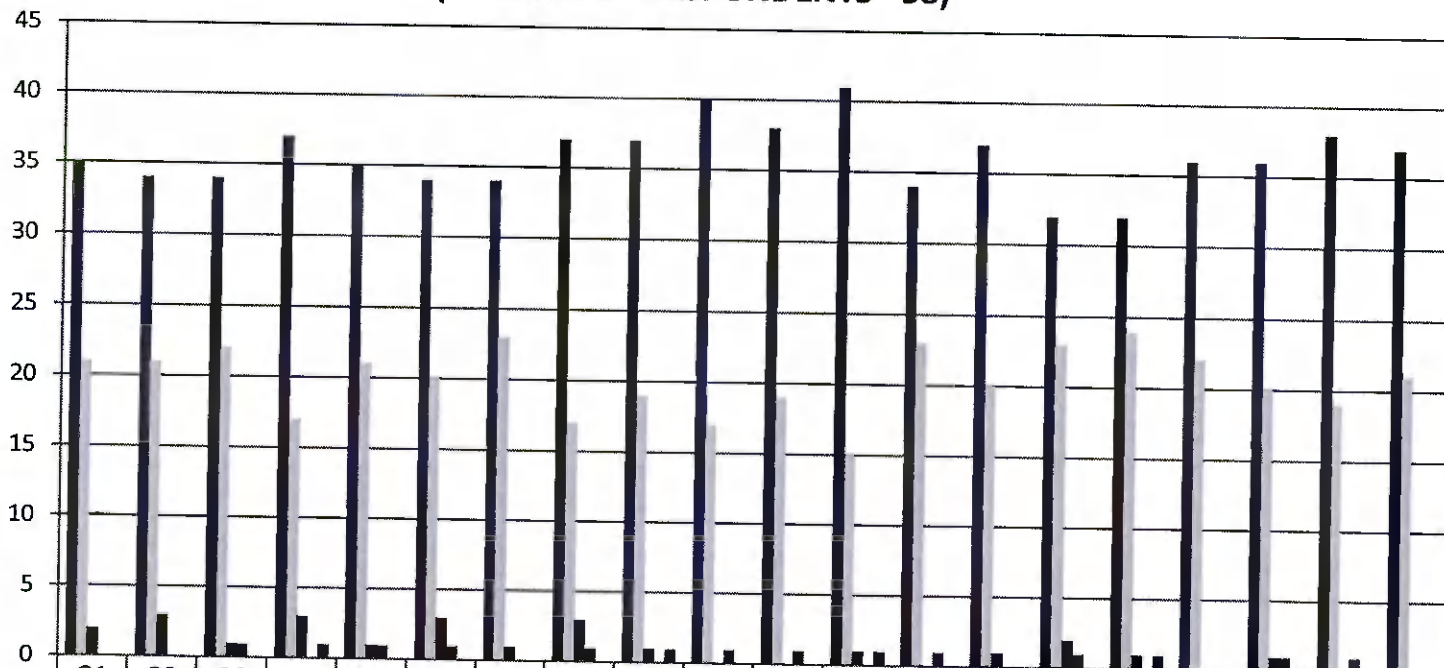
Gowrivakkam, Chennai-600073.

Affiliated to University of Madras, ISO 9001:2015 Certified Institution

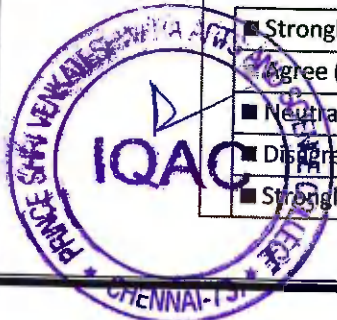
STUDENT FEEDBACK ON CURRICULUM, INFRASTRUCTURE FACILITIES & AMBIENCE OF THE INSTITUTION - 2020-2021

B.Sc. BIOTECHNOLOGY

(NUMBER OF RESPONDENTS - 58)



	Q1	Q2	Q3	Q4	Q5	Q6	Q7	Q8	Q9	Q10	Q11	Q12	Q13	Q14	Q15	Q16	Q17	Q18	Q19	Q20
Strongly Agree (5)	35	34	34	37	35	34	34	37	37	40	38	41	34	37	32	32	36	36	38	37
Agree (4)	21	21	22	17	21	20	23	17	19	17	19	15	23	20	23	24	22	20	19	21
Neutral (3)	2	3	1	3	1	3	1	3	1	0	0	1	0	1	2	1	0	1	0	0
Disagree (2)	0	0	1	0	1	1	0	1	0	1	1	0	1	0	1	0	0	1	1	0
Strongly Disagree (1)	0	0	0	1	0	0	0	0	1	0	0	1	0	0	0	1	0	0	0	0



Principal
PRINCIPAL
 PRINCE SHRI VENKATESHWARA
 ARTS AND SCIENCE COLLEGE
 CHENNAI-600073



PRINCE SHRI VENKATESWARA ARTS AND SCIENCE COLLEGE

Gowrivakkam, Chennai-600073.

Affiliated to University of Madras, ISO 9001:2015 Certified Institution

9	Rate the way of Grievances/problems are redressed and resolved in time. (Related to Curriculum)	136	84	2	1	1
10	Rate the functioning of Placement Cell in getting jobs and placements (Related to Curriculum)	133	89	1	1	0
11	Rate the transparency of the evaluation system in the College and the internal evaluation process by the teachers (Related to Assessment)	137	85	1	1	0
12	Rate the PSVASC contributions on Entrepreneurship Development (Related to Ambience)	133	85	4	1	1
13	Rate the learning environment with adequate resources in Library (Related to Infrastructure)	134	86	2	2	0
14	Rate the laboratories & other IT facilities are excellent for effective learning (Related to Infrastructure and ambience of the institution)	132	87	3	1	1
15	Rate the infrastructure, cleanliness and other facilities in campus / canteen / common room / toilets / washrooms and maintenance (Related to Infrastructure and ambience of the institution)	135	88	1	0	0
16	Rate the sports (Indoor/Outdoor) facilities available and its maintenance (Related to Infrastructure and ambience of the institution)	136	84	4	0	0
17	Rate the security and proctorial services in college for students. (Related to Infrastructure and ambience of the institution)	133	84	6	1	0
18	Rate the resources and practices for conservation of energy, water, etc. in the campus (Related to Infrastructure and ambience of the institution)	138	81	4	1	0
19	Rate the usage of modern teaching aids, Gadget, Smart class room and Web resources for content delivery (Related to Infrastructure and ambience of the institution)	132	85	4	2	1
20	Rate the consistent maintenance of green campus (Related to Infrastructure and ambience of the institution)	133	87	3	1	0



B. Kalpave
PRINCIPAL
PRINCE SHRI VENKATESHWARA
ARTS AND SCIENCE COLLEGE
GOWRIVAKKAM, CHENNAI-600 073.



PRINCE SHRI VENKATESWARA ARTS AND SCIENCE COLLEGE

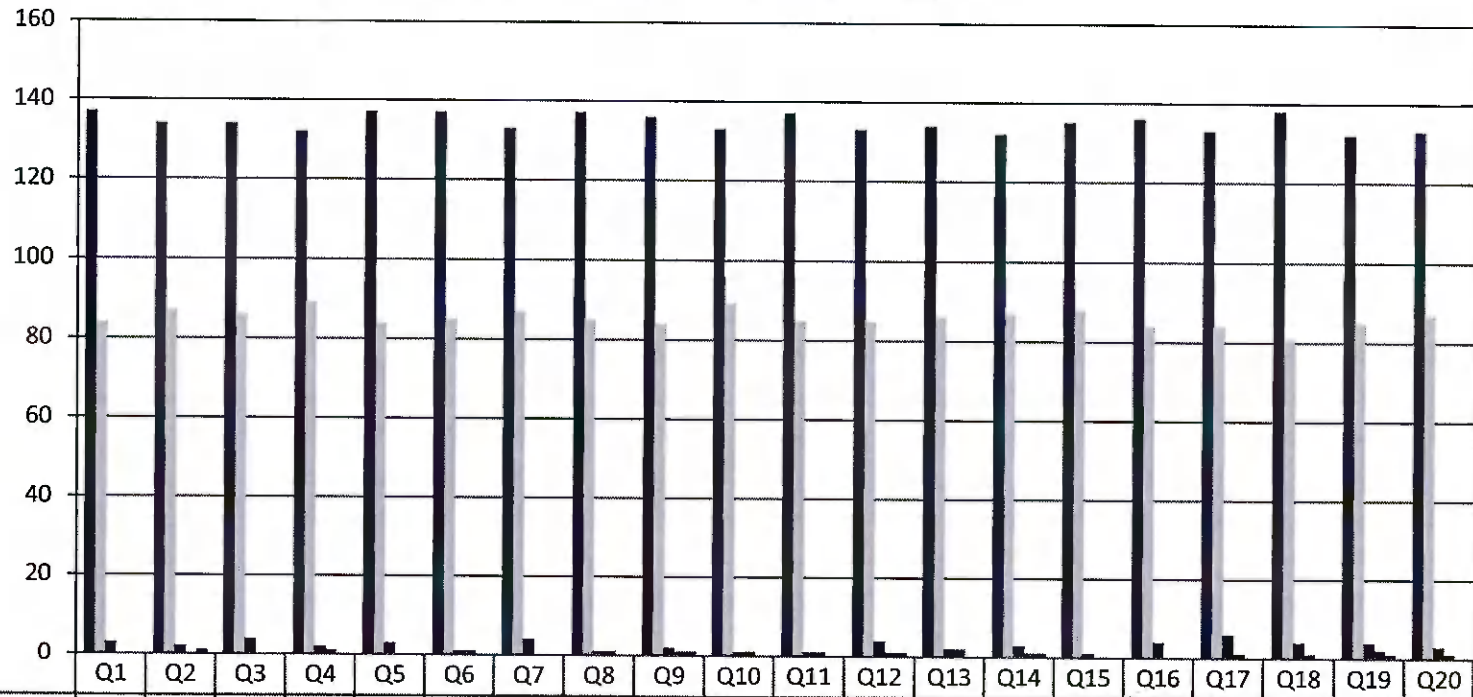
Gowrivakkam, Chennai-600073.

Affiliated to University of Madras, ISO 9001:2015 Certified Institution

STUDENT FEEDBACK ON CURRICULUM, INFRASTRUCTURE FACILITIES & AMBIENCE OF THE INSTITUTION - 2020-2021

B.COM (ACCOUNTING & FINANCE)

(NUMBER OF RESPONDENTS - 224)



	Q1	Q2	Q3	Q4	Q5	Q6	Q7	Q8	Q9	Q10	Q11	Q12	Q13	Q14	Q15	Q16	Q17	Q18	Q19	Q20
Strongly Agree (5)	137	134	134	132	137	137	133	137	136	133	137	133	134	132	135	136	133	138	132	133
Agree (4)	84	87	86	89	84	85	87	85	84	89	85	85	86	87	88	84	84	81	85	87
Neutral (3)	3	2	4	2	3	1	4	1	2	1	1	4	2	3	1	4	6	4	4	3
Disagree (2)	0	0	0	1	0	1	0	1	1	1	1	1	2	1	0	0	1	0	0	0
Strongly Disagree (1)	0	1	0	0	0	0	0	0	1	0	0	1	0	1	0	0	0	0	0	0



B. Kalpana
PRINCIPAL
 PRINCE SHRI VENKATESHWARA
 ARTS AND SCIENCE COLLEGE
 GOWRIVAKKAM, CHENNAI-600 073.

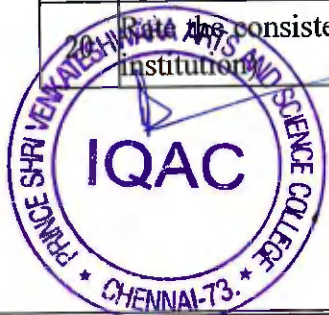


PRINCE SHRI VENKATESWARA ARTS AND SCIENCE COLLEGE

Gowrivakkam, Chennai-600073.

Affiliated to University of Madras, ISO 9001:2015 Certified Institution

9	Rate the way of Grievances/problems are redressed and resolved in time. (Related to Curriculum)	17	14	6	1	0
10	Rate the functioning of Placement Cell in getting jobs and placements (Related to Curriculum)	26	5	6	1	0
11	Rate the transparency of the evaluation system in the College and the internal evaluation process by the teachers (Related to Assessment)	17	17	4	0	0
12	Rate the PSVASC contributions on Entrepreneurship Development (Related to Ambience)	27	5	6	0	0
13	Rate the learning environment with adequate resources in Library (Related to Infrastructure)	22	9	7	0	0
14	Rate the laboratories & other IT facilities are excellent for effective learning (Related to Infrastructure and ambience of the institution)	26	6	6	0	0
15	Rate the infrastructure, cleanliness and other facilities in campus / canteen / common room / toilets / washrooms and maintenance (Related to Infrastructure and ambience of the institution)	22	11	5	0	0
16	Rate the sports (Indoor/Outdoor) facilities available and its maintenance (Related to Infrastructure and ambience of the institution)	20	11	6	0	1
17	Rate the security and proctorial services in college for students. (Related to Infrastructure and ambience of the institution)	27	0	9	1	1
18	Rate the resources and practices for conservation of energy, water, etc. in the campus (Related to Infrastructure and ambience of the institution)	24	5	7	2	0
19	Rate the usage of modern teaching aids, Gadget, Smart class room and Web resources for content delivery (Related to Infrastructure and ambience of the institution)	23	7	6	1	1
20	Rate the consistent maintenance of green campus (Related to Infrastructure and ambience of the institution)	24	8	6	0	0



B. Kalpana
PRINCIPAL
PRINCE SHRI VENKATESHWARA
ARTS AND SCIENCE COLLEGE
GOWRIVAKKAM, CHENNAI-600 073.



PRINCE SHRI VENKATESWARA ARTS AND SCIENCE COLLEGE

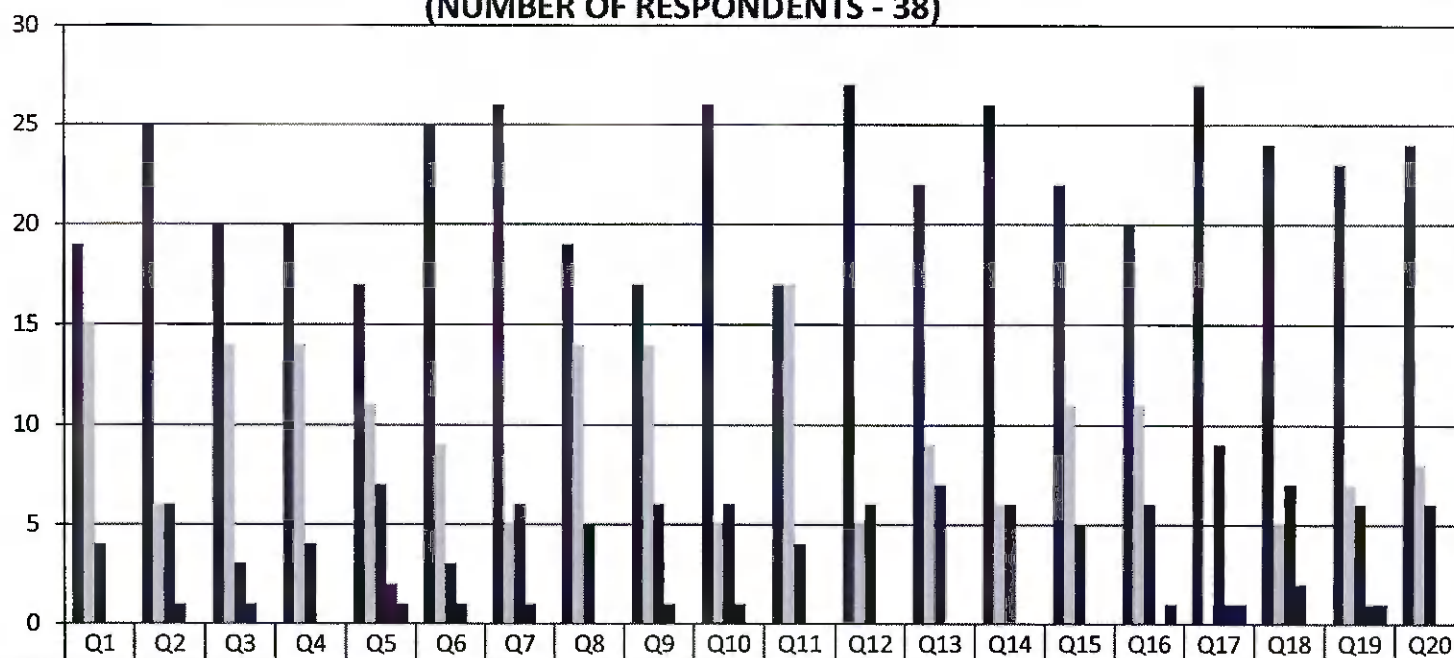
Gowrivakkam, Chennai-600073.

Affiliated to University of Madras, ISO 9001:2015 Certified Institution

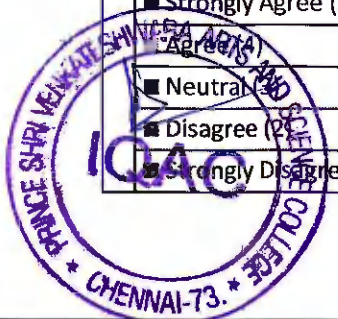
STUDENT FEEDBACK ON CURRICULUM, INFRASTRUCTURE FACILITIES & AMBIENCE OF THE INSTITUTION - 2020-2021

B.A. ENGLISH

(NUMBER OF RESPONDENTS - 38)



	Q1	Q2	Q3	Q4	Q5	Q6	Q7	Q8	Q9	Q10	Q11	Q12	Q13	Q14	Q15	Q16	Q17	Q18	Q19	Q20
Strongly Agree (5)	19	25	20	20	17	25	26	19	17	26	17	27	22	26	22	20	27	24	23	24
Agree (4)	15	6	14	14	11	9	5	14	14	5	17	5	9	6	11	11	0	5	7	8
Neutral (3)	4	6	3	4	7	3	6	5	6	6	4	6	7	6	5	6	9	7	6	6
Disagree (2)	0	1	1	0	2	1	1	0	1	1	0	0	0	0	0	0	1	2	1	0
Strongly Disagree (1)	0	0	0	0	1	0	0	0	0	0	0	0	0	0	0	1	1	0	1	0



B. Kalyane
PRINCIPAL

PRINCE SHRI VENKATESHWARA
ARTS AND SCIENCE COLLEGE
GOWRIVAKKAM, CHENNAI-600 073



PRINCE SHRI VENKATESWARA ARTS AND SCIENCE COLLEGE

Gowrivakkam, Chennai-600073.

Affiliated to University of Madras, ISO 9001:2015 Certified Institution

STUDENT FEEDBACK ON CURRICULUM, INFRASTRUCTURE FACILITIES & AMBIENCE OF THE INSTITUTION – ANALYSIS REPORT

Academic Year 2020-21

Department BBA

Number of Respondents 61

Feedback Rate: Strongly Agree (5), Agree (4), Neutral (3), Disagree (2), Strongly Disagree (1)

S. No	Feedback on Curriculum, infrastructure facilities & ambience of the institution	5	4	3	2	1
1	Rate the courses in terms of their relevance to the latest and/ or future technologies and useful for employability (Related to Curriculum)	42	14	5	0	0
2	Rate the quality and relevance of the courses included in the curriculum (Related to Curriculum)	52	3	6	0	0
3	Rate the opportunity for students to participate in internship, contest, field visit, IPT and conference (Related to Curriculum)	47	7	7	0	0
4	Rate the quality of teaching and teacher's approach in the entire program (Related to Curriculum)	51	4	6	0	0
5	Rate the infrastructure of the classrooms for effective learning (Related to Curriculum)	47	9	5	0	0
6	Rate the usage of teaching aids and ICT in the class by faculty to facilitate teaching (Related to Curriculum)	45	9	6	0	1
7	Rate the opportunity for students to participate in extension activities (Related to Curriculum)	52	2	5	1	1
8	Rate the opportunities provided to utilize Research facilities & assistance to prepare for Hackathons and other technical challenges (Related to Curriculum)	49	3	7	2	0



PRINCE SHRI VENKATESWARA ARTS AND SCIENCE COLLEGE

Gowrivakkam, Chennai-600073.

Affiliated to University of Madras, ISO 9001:2015 Certified Institution

9	Rate the way of Grievances/problems are redressed and resolved in time. (Related to Curriculum)	48	5	6	1	1
10	Rate the functioning of Placement Cell in getting jobs and placements (Related to Curriculum)	49	6	6	0	0
11	Rate the transparency of the evaluation system in the College and the internal evaluation process by the teachers (Related to Assessment)	51	5	5	0	0
12	Rate the PSVASC contributions on Entrepreneurship Development (Related to Ambience)	50	4	6	1	0
13	Rate the learning environment with adequate resources in Library (Related to Infrastructure)	45	7	8	1	0
14	Rate the laboratories & other IT facilities are excellent for effective learning (Related to Infrastructure and ambience of the institution)	45	11	5	0	0
15	Rate the infrastructure, cleanliness and other facilities in campus / canteen / common room / toilets / washrooms and maintenance (Related to Infrastructure and ambience of the institution)	54	2	2	2	1
16	Rate the sports (Indoor/Outdoor) facilities available and its maintenance (Related to Infrastructure and ambience of the institution)	50	2	8	1	0
17	Rate the security and proctorial services in college for students. (Related to Infrastructure and ambience of the institution)	51	3	6	1	0
18	Rate the resources and practices for conservation of energy, water, etc. in the campus (Related to Infrastructure and ambience of the institution)	50	6	5	0	0
19	Rate the usage of modern teaching aids, Gadget, Smart class room and Web resources for content delivery (Related to Infrastructure and ambience of the institution)	47	7	6	1	0
20	Rate the consistent maintenance of green campus (Related to Infrastructure and ambience of the institution)	51	3	6	1	0



B. Kalpana
PRINCIPAL
PRINCE SHRI VENKATESHWARA
ARTS AND SCIENCE COLLEGE
GOWRIVAKKAM, CHENNAI-600 073.



PRINCE SHRI VENKATESWARA ARTS AND SCIENCE COLLEGE

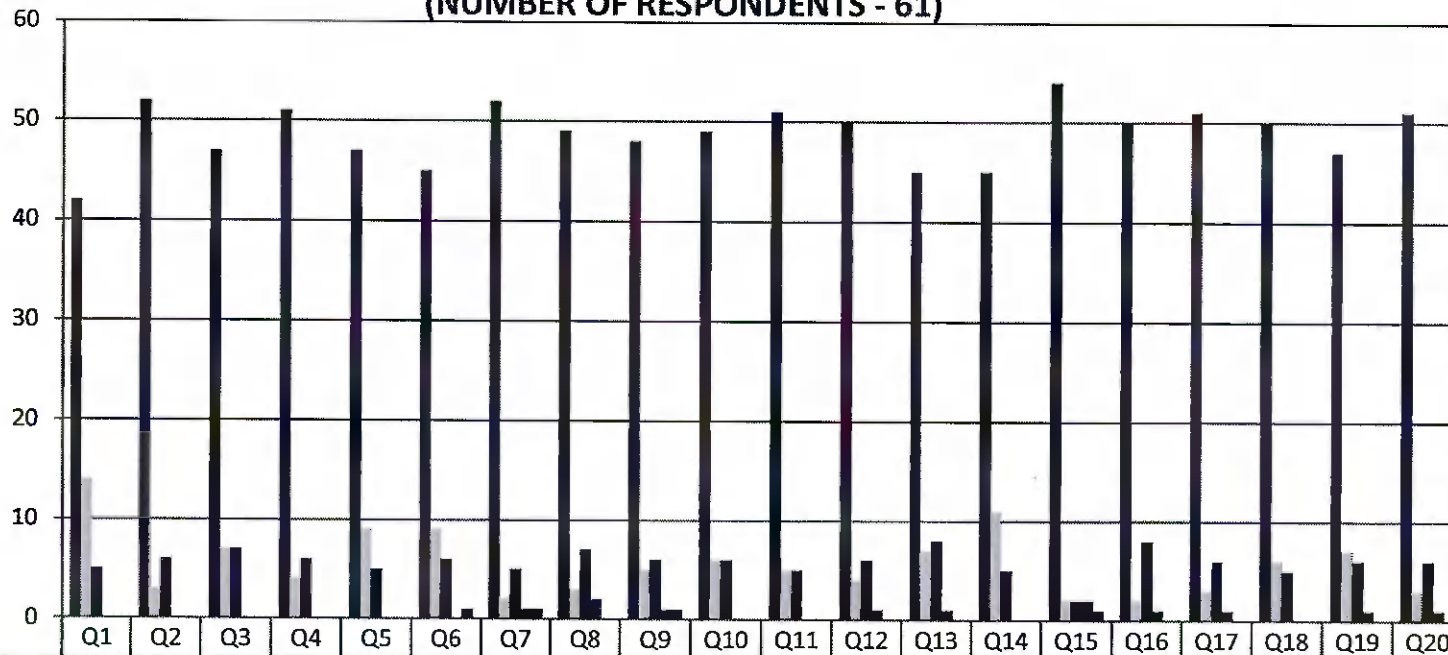
Gowrivakkam, Chennai-600073

Affiliated to University of Madras, ISO 9001:2015 Certified Institution

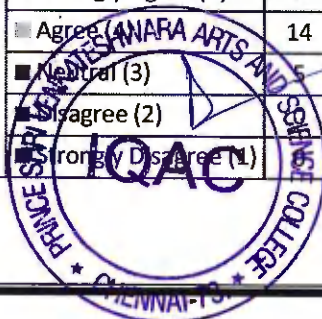
STUDENT FEEDBACK ON CURRICULUM, INFRASTRUCTURE FACILITIES & AMBIENCE OF THE INSTITUTION - 2020-2021

BBA

(NUMBER OF RESPONDENTS - 61)



	Q1	Q2	Q3	Q4	Q5	Q6	Q7	Q8	Q9	Q10	Q11	Q12	Q13	Q14	Q15	Q16	Q17	Q18	Q19	Q20
Strongly Agree (5)	42	52	47	51	47	45	52	49	48	49	51	50	45	45	54	50	51	50	47	51
Agree (4)	14	3	7	4	9	9	2	3	5	6	5	4	7	11	2	2	3	6	7	3
Neutral (3)	6	7	6	5	6	6	5	7	6	6	5	6	8	5	2	8	6	5	6	6
Disagree (2)	0	0	0	0	0	0	1	2	1	0	0	1	1	0	2	1	1	0	1	1
Strongly Disagree (1)	0	0	0	0	0	1	1	0	1	0	0	0	0	0	1	0	0	0	0	0



20.12.20
PRINCIPAL
 PRINCE SHRI VENKATESHWARA
 ARTS AND SCIENCE COLLEGE
 GOWRIVAKKAM, CHENNAI-600073



PRINCE SHRI VENKATESWARA ARTS AND SCIENCE COLLEGE

Gowrivakkam, Chennai-600073.

Affiliated to University of Madras, ISO 9001:2015 Certified Institution

STUDENT FEEDBACK ON CURRICULUM, INFRASTRUCTURE FACILITIES & AMBIENCE OF THE INSTITUTION – ANALYSIS REPORT

Academic Year 2020-21
Department M.Sc. Microbiology
Number of Respondents 15

Feedback Rate: Strongly Agree (5), Agree (4), Neutral (3), Disagree (2), Strongly Disagree (1)

S. No	Feedback on Curriculum, infrastructure facilities & ambience of the institution	5	4	3	2	1
1	Rate the courses in terms of their relevance to the latest and/ or future technologies and useful for employability (Related to Curriculum)	9	5	1	0	0
2	Rate the quality and relevance of the courses included in the curriculum (Related to Curriculum)	9	6	0	0	0
3	Rate the opportunity for students to participate in internship, contest, field visit, IPT and conference (Related to Curriculum)	10	4	1	0	0
4	Rate the quality of teaching and teacher's approach in the entire program (Related to Curriculum)	9	5	1	0	0
5	Rate the infrastructure of the classrooms for effective learning (Related to Curriculum)	11	4	0	0	0
6	Rate the usage of teaching aids and ICT in the class by faculty to facilitate teaching (Related to Curriculum)	11	3	0	1	0
7	Rate the opportunity for students to participate in extension activities (Related to Curriculum)	10	4	0	1	0
8	Rate the opportunities provided to utilize Research facilities & assistance to prepare for Hackathons and other technical challenges (Related to Curriculum)	9	6	0	0	0

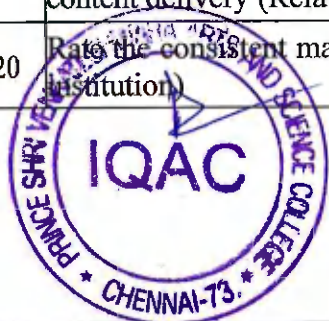


PRINCE SHRI VENKATESWARA ARTS AND SCIENCE COLLEGE

Gowrivakkam, Chennai-600073.

Affiliated to University of Madras, ISO 9001:2015 Certified Institution

9	Rate the way of Grievances/problems are redressed and resolved in time. (Related to Curriculum)	10	5	0	0	0
10	Rate the functioning of Placement Cell in getting jobs and placements (Related to Curriculum)	11	3	1	0	0
11	Rate the transparency of the evaluation system in the College and the internal evaluation process by the teachers (Related to Assessment)	11	3	1	0	0
12	Rate the PSVASC contributions on Entrepreneurship Development (Related to Ambience)	9	5	0	1	0
13	Rate the learning environment with adequate resources in Library (Related to Infrastructure)	13	1	0	1	0
14	Rate the laboratories & other IT facilities are excellent for effective learning (Related to Infrastructure and ambience of the institution)	12	2	1	0	0
15	Rate the infrastructure, cleanliness and other facilities in campus / canteen / common room / toilets / washrooms and maintenance (Related to Infrastructure and ambience of the institution)	11	3	1	0	0
16	Rate the sports (Indoor/Outdoor) facilities available and its maintenance (Related to Infrastructure and ambience of the institution)	10	4	1	0	0
17	Rate the security and proctorial services in college for students. (Related to Infrastructure and ambience of the institution)	9	4	2	0	0
18	Rate the resources and practices for conservation of energy, water, etc. in the campus (Related to Infrastructure and ambience of the institution)	11	3	1	0	0
19	Rate the usage of modern teaching aids, Gadget, Smart class room and Web resources for content delivery (Related to Infrastructure and ambience of the institution)	11	4	0	0	0
20	Rate the consistent maintenance of green campus (Related to Infrastructure and ambience of the institution)	14	1	0	0	0



B. Kalpana
PRINCIPAL
PRINCE SHRI VENKATESHWARA
ARTS AND SCIENCE COLLEGE
GOWRIVAKKAM, CHENNAI-600 073.



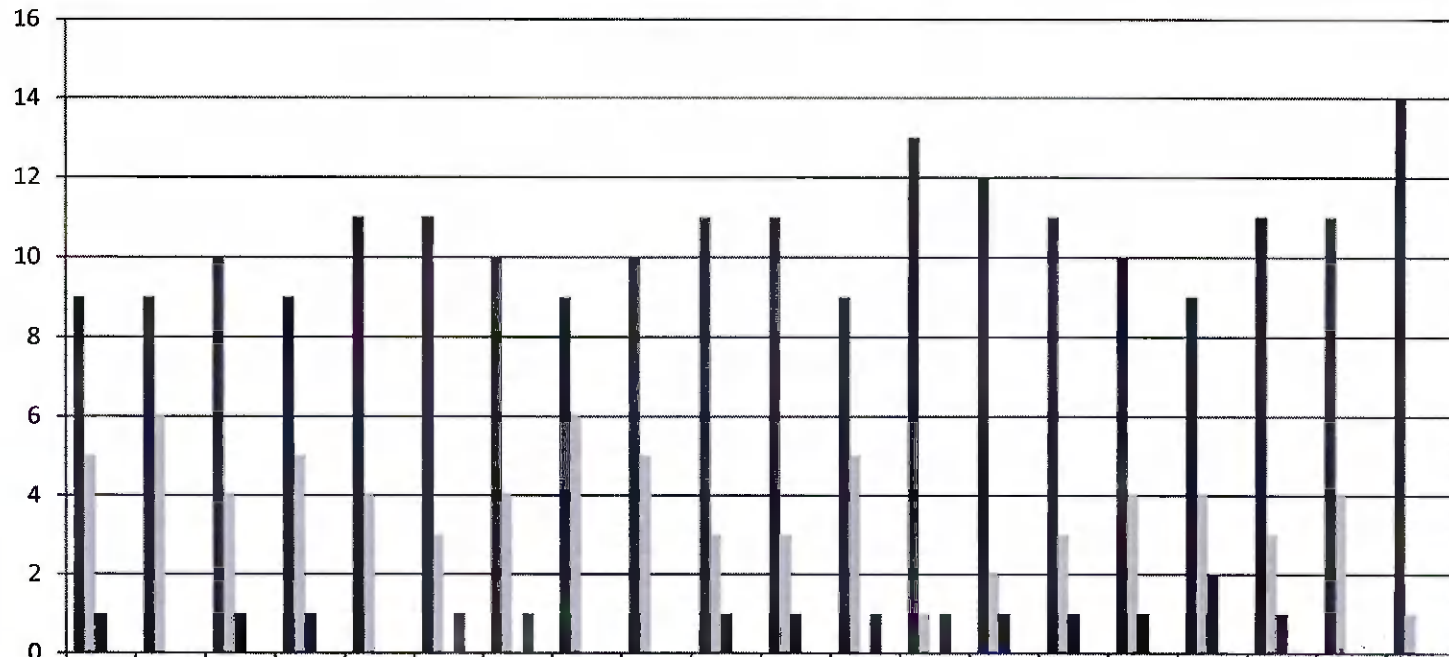
PRINCE SHRI VENKATESWARA ARTS AND SCIENCE COLLEGE

Gowrivakkam, Chennai-600073.

Affiliated to University of Madras, ISO 9001:2015 Certified Institution

STUDENT FEEDBACK ON CURRICULUM, INFRASTRUCTURE FACILITIES & AMBIENCE OF THE INSTITUTION - 2020-2021

M.Sc. MICROBIOLOGY
(NUMBER OF RESPONDENTS - 15)



K. Kalpana
PRINCIPAL
PRINCE SHRI VENKATESHWARA
ARTS AND SCIENCE COLLEGE



PRINCE SHRI VENKATESWARA ARTS AND SCIENCE COLLEGE

Gowrivakkam, Chennai-600073.

Affiliated to University of Madras, ISO 9001:2015 Certified Institution

STUDENT FEEDBACK ON CURRICULUM, INFRASTRUCTURE FACILITIES & AMBIENCE OF THE INSTITUTION – ANALYSIS REPORT

Academic Year 2020-21
Department M.Sc. Computer Science
Number of Respondents 14

Feedback Rate: Strongly Agree (5), Agree (4), Neutral (3), Disagree (2), Strongly Disagree (1)

S. No	Feedback on Curriculum, infrastructure facilities & ambience of the institution	5	4	3	2	1
1	Rate the courses in terms of their relevance to the latest and/ or future technologies and useful for employability (Related to Curriculum)	9	3	0	1	1
2	Rate the quality and relevance of the courses included in the curriculum (Related to Curriculum)	5	5	3	1	0
3	Rate the opportunity for students to participate in internship, contest, field visit, IPT and conference (Related to Curriculum)	6	6	1	1	0
4	Rate the quality of teaching and teacher's approach in the entire program (Related to Curriculum)	5	5	3	0	1
5	Rate the infrastructure of the classrooms for effective learning (Related to Curriculum)	4	7	2	1	0
6	Rate the usage of teaching aids and ICT in the class by faculty to facilitate teaching (Related to Curriculum)	5	5	3	1	0
7	Rate the opportunity for students to participate in extension activities (Related to Curriculum)	3	5	4	1	1
8	Rate the opportunities provided to utilize Research facilities & assistance to prepare for Hackathons and other technical challenges (Related to Curriculum)	9	3	2	0	0



PRINCE SHRI VENKATESWARA ARTS AND SCIENCE COLLEGE

Gowrivakkam, Chennai-600073.

Affiliated to University of Madras, ISO 9001:2015 Certified Institution

9	Rate the way of Grievances/problems are redressed and resolved in time. (Related to Curriculum)	5	6	2	1	0
10	Rate the functioning of Placement Cell in getting jobs and placements (Related to Curriculum)	2	8	2	1	1
11	Rate the transparency of the evaluation system in the College and the internal evaluation process by the teachers (Related to Assessment)	9	3	2	0	0
12	Rate the PSVASC contributions on Entrepreneurship Development (Related to Ambience)	4	7	2	0	1
13	Rate the learning environment with adequate resources in Library (Related to Infrastructure)	8	3	3	0	0
14	Rate the laboratories & other IT facilities are excellent for effective learning (Related to Infrastructure and ambience of the institution)	7	4	2	1	0
15	Rate the infrastructure, cleanliness and other facilities in campus / canteen / common room / toilets / washrooms and maintenance (Related to Infrastructure and ambience of the institution)	6	7	1	0	0
16	Rate the sports (Indoor/Outdoor) facilities available and its maintenance (Related to Infrastructure and ambience of the institution)	9	3	1	1	0
17	Rate the security and proctorial services in college for students. (Related to Infrastructure and ambience of the institution)	2	8	3	1	0
18	Rate the resources and practices for conservation of energy, water, etc. in the campus (Related to Infrastructure and ambience of the institution)	7	6	1	0	0
19	Rate the usage of modern teaching aids, Gadget, Smart class room and Web resources for content delivery (Related to Infrastructure and ambience of the institution)	7	5	1	1	0
20	Rate the consistent maintenance of green campus (Related to Infrastructure and ambience of the institution)	2	8	2	1	1



B. Kalpana
PRINCIPAL
PRINCE SHRI VENKATESHWARA
ARTS AND SCIENCE COLLEGE
GOWRIVAKKAM, CHENNAI-600 073.



PRINCE SHRI VENKATESWARA ARTS AND SCIENCE COLLEGE

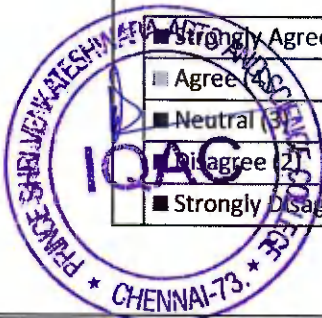
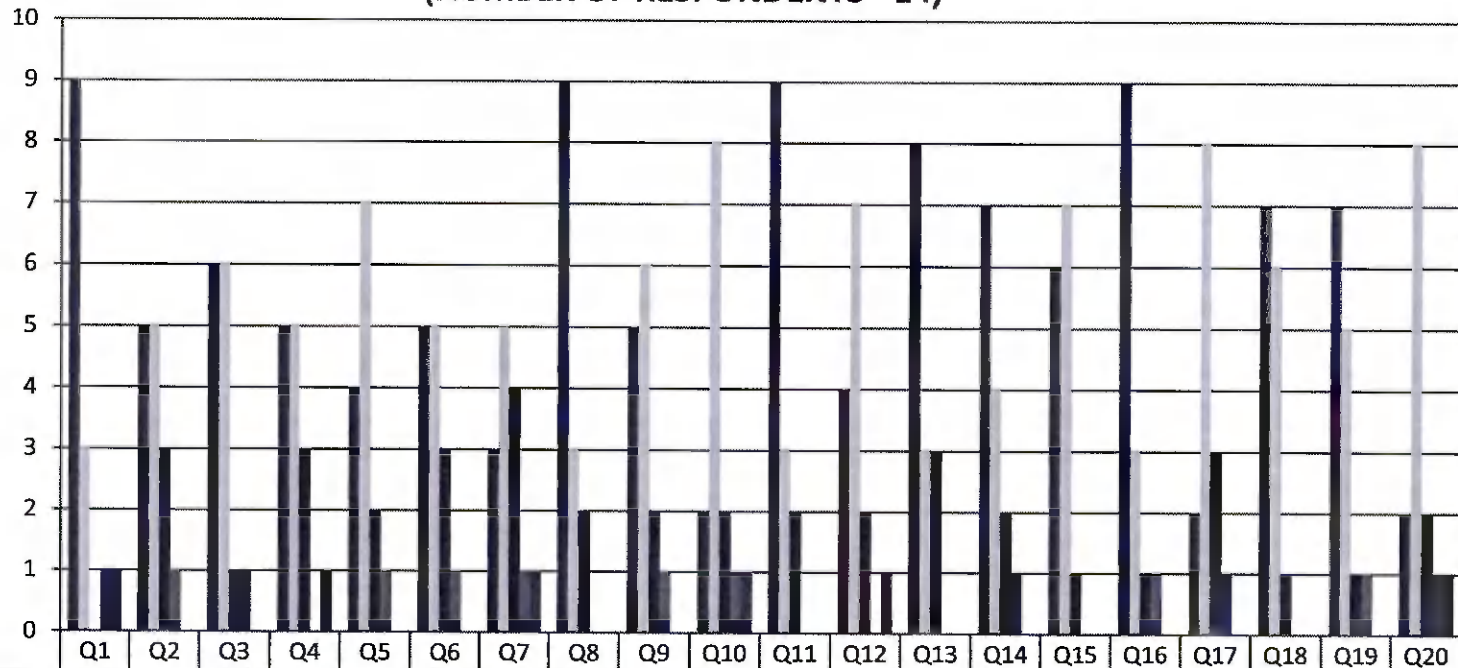
Gowrivakkam, Chennai-600073.

Affiliated to University of Madras, ISO 9001:2015 Certified Institution

STUDENT FEEDBACK ON CURRICULUM, INFRASTRUCTURE FACILITIES & AMBIENCE OF THE INSTITUTION - 2020-2021

M.Sc. COMPUTER SCIENCE

(NUMBER OF RESPONDENTS - 14)



B. Kalpana
PRINCIPAL
 PRINCE SHRI VENKATESHWARA
 ARTS AND SCIENCE COLLEGE
 CHENNAI-600 073.



PRINCE SHRI VENKATESWARA ARTS AND SCIENCE COLLEGE

Gowrivakkam, Chennai-600073.

Affiliated to University of Madras, ISO 9001:2015 Certified Institution

STUDENT FEEDBACK ON CURRICULUM, INFRASTRUCTURE FACILITIES & AMBIENCE OF THE INSTITUTION – ANALYSIS REPORT

Academic Year 2020-21
Department M.Sc. Biochemistry
Number of Respondents 6

Feedback Rate: Strongly Agree (5), Agree (4), Neutral (3), Disagree (2), Strongly Disagree (1)

S. No	Feedback on Curriculum, infrastructure facilities & ambience of the institution	5	4	3	2	1
1	Rate the courses in terms of their relevance to the latest and/ or future technologies and useful for employability (Related to Curriculum)	4	2	0	0	0
2	Rate the quality and relevance of the courses included in the curriculum (Related to Curriculum)	5	1	0	0	0
3	Rate the opportunity for students to participate in internship, contest, field visit, IPT and conference (Related to Curriculum)	5	1	0	0	0
4	Rate the quality of teaching and teacher's approach in the entire program (Related to Curriculum)	5	1	0	0	0
5	Rate the infrastructure of the classrooms for effective learning (Related to Curriculum)	4	2	0	0	0
6	Rate the usage of teaching aids and ICT in the class by faculty to facilitate teaching (Related to Curriculum)	4	2	0	0	0
7	Rate the opportunity for students to participate in extension activities (Related to Curriculum)	4	1	0	1	0
8	Rate the opportunities provided to utilize Research facilities & assistance to prepare for Hackathons and other technical challenges (Related to Curriculum)	5	1	0	0	0

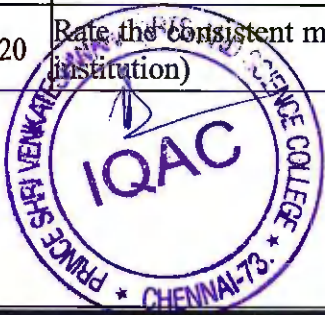


PRINCE SHRI VENKATESWARA ARTS AND SCIENCE COLLEGE

Gowrivakkam, Chennai-600073

Affiliated to University of Madras, ISO 9001:2015 Certified Institution

9	Rate the way of Grievances/problems are redressed and resolved in time. (Related to Curriculum)	4	2	0	0	0
10	Rate the functioning of Placement Cell in getting jobs and placements (Related to Curriculum)	5	1	0	0	0
11	Rate the transparency of the evaluation system in the College and the internal evaluation process by the teachers (Related to Assessment)	5	1	0	0	0
12	Rate the PSVASC contributions on Entrepreneurship Development (Related to Ambience)	5	1	0	0	0
13	Rate the learning environment with adequate resources in Library (Related to Infrastructure)	4	2	0	0	0
14	Rate the laboratories & other IT facilities are excellent for effective learning (Related to Infrastructure and ambience of the institution)	4	1	0	1	0
15	Rate the infrastructure, cleanliness and other facilities in campus / canteen / common room / toilets / washrooms and maintenance (Related to Infrastructure and ambience of the institution)	5	1	0	0	0
16	Rate the sports (Indoor/Outdoor) facilities available and its maintenance (Related to Infrastructure and ambience of the institution)	4	2	0	0	0
17	Rate the security and proctorial services in college for students. (Related to Infrastructure and ambience of the institution)	5	1	0	0	0
18	Rate the resources and practices for conservation of energy, water, etc. in the campus (Related to Infrastructure and ambience of the institution)	5	1	0	0	0
19	Rate the usage of modern teaching aids, Gadget, Smart class room and Web resources for content delivery (Related to Infrastructure and ambience of the institution)	5	1	0	0	0
20	Rate the consistent maintenance of green campus (Related to Infrastructure and ambience of the institution)	5	1	0	0	0



B. Kalpana
PRINCIPAL
PRINCE SHRI VENKATESHWARA
ARTS AND SCIENCE COLLEGE
GOWRIVAKKAM, CHENNAI-600 073



PRINCE SHRI VENKATESWARA ARTS AND SCIENCE COLLEGE

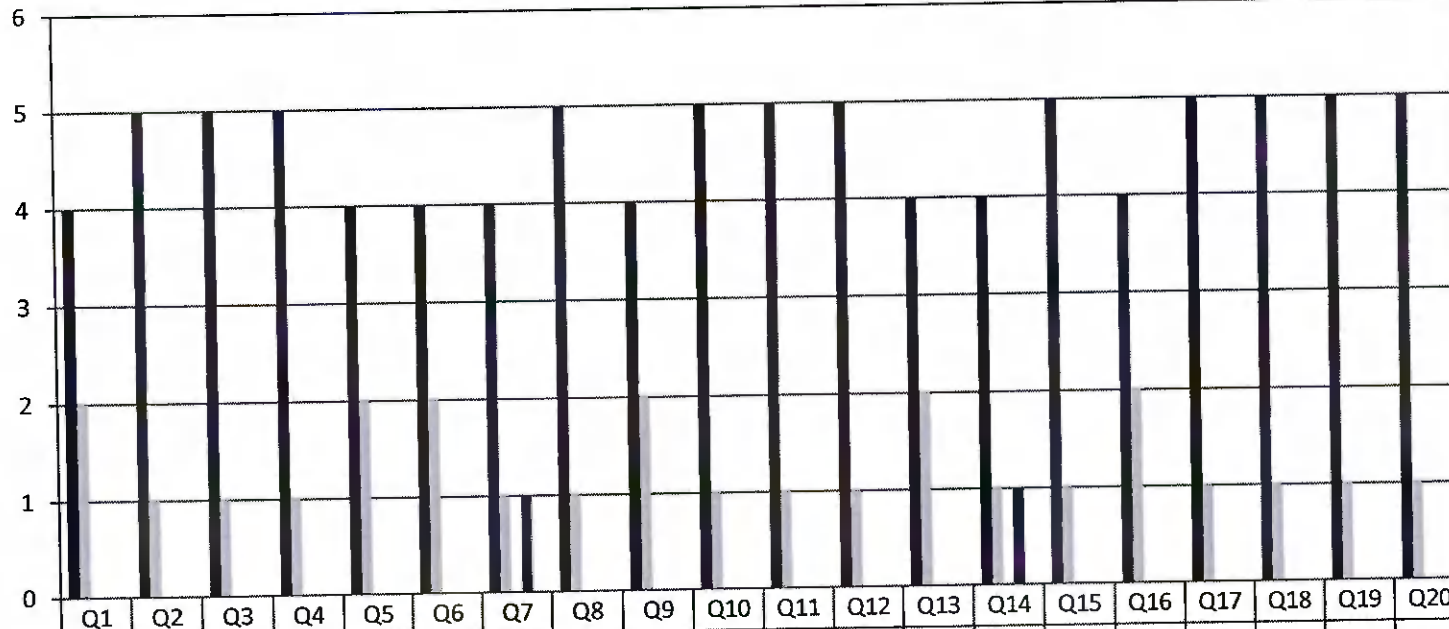
Gowrivakkam, Chennai-600073.

Affiliated to University of Madras, ISO 9001:2015 Certified Institution

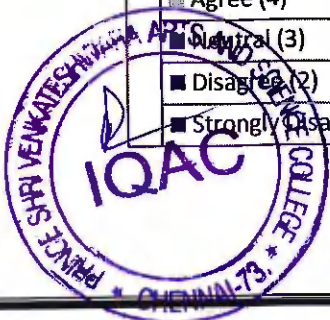
STUDENT FEEDBACK ON CURRICULUM, INFRASTRUCTURE FACILITIES & AMBIENCE OF THE INSTITUTION - 2020-2021

M.Sc. BIOCHEMISTRY

(NUMBER OF RESPONDENTS - 6)



	Q1	Q2	Q3	Q4	Q5	Q6	Q7	Q8	Q9	Q10	Q11	Q12	Q13	Q14	Q15	Q16	Q17	Q18	Q19	Q20
Strongly Agree (5)	4	5	5	5	4	4	4	5	4	5	5	5	4	4	5	4	5	5	5	5
Agree (4)	2	1	1	1	2	2	1	1	2	1	1	1	2	1	1	2	1	1	1	1
Neutral (3)	0	0	0	0	0	0	0	0	0	0	0	0	0	0	0	0	0	0	0	0
Disagree (2)	0	0	0	0	0	0	1	0	0	0	0	0	0	1	0	0	0	0	0	0
Strongly Disagree (1)	0	0	0	0	0	0	0	0	0	0	0	0	0	0	0	0	0	0	0	0



P. Kalpana
PRINCIPAL
 PRINCE SHRI VENKATESHWARA
 ARTS AND SCIENCE COLLEGE
 GOWRIVAKKAM, CHENNAI-600 073.



PRINCE SHRI VENKATESWARA ARTS AND SCIENCE COLLEGE

Gowrivakkam, Chennai-600073.

Affiliated to University of Madras, ISO 9001:2015 Certified Institution

STUDENT FEEDBACK ON CURRICULUM, INFRASTRUCTURE FACILITIES & AMBIENCE OF THE INSTITUTION – ANALYSIS REPORT

Academic Year

2020-21

Department

M.Sc. Biotechnology

Number of Respondents

7

Feedback Rate: Strongly Agree (5), Agree (4), Neutral (3), Disagree (2), Strongly Disagree (1)

S. No	Feedback on Curriculum, infrastructure facilities & ambience of the institution	5	4	3	2	1
1	Rate the courses in terms of their relevance to the latest and/ or future technologies and useful for employability (Related to Curriculum)	4	2	1	0	0
2	Rate the quality and relevance of the courses included in the curriculum (Related to Curriculum)	6	0	1	0	0
3	Rate the opportunity for students to participate in internship, contest, field visit, IPT and conference (Related to Curriculum)	4	1	2	0	0
4	Rate the quality of teaching and teacher's approach in the entire program (Related to Curriculum)	6	0	0	1	0
5	Rate the infrastructure of the classrooms for effective learning (Related to Curriculum)	4	2	1	0	0
6	Rate the usage of teaching aids and ICT in the class by faculty to facilitate teaching (Related to Curriculum)	6	1	0	0	0
7	Rate the opportunity for students to participate in extension activities (Related to Curriculum)	4	2	0	1	0
8	Rate the opportunities provided to utilize Research facilities & assistance to prepare for Hackathons and other technical challenges (Related to Curriculum)	2	4	1	0	0



PRINCE SHRI VENKATESWARA ARTS AND SCIENCE COLLEGE

Gowrivakkam, Chennai-600073.

Affiliated to University of Madras, ISO 9001:2015 Certified Institution

9	Rate the way of Grievances/problems are redressed and resolved in time. (Related to Curriculum)	6	0	0	1	0
10	Rate the functioning of Placement Cell in getting jobs and placements (Related to Curriculum)	5	1	0	1	0
11	Rate the transparency of the evaluation system in the College and the internal evaluation process by the teachers (Related to Assessment)	5	2	0	0	0
12	Rate the PSVASC contributions on Entrepreneurship Development (Related to Ambience)	5	1	0	1	0
13	Rate the learning environment with adequate resources in Library (Related to Infrastructure)	1	4	1	1	0
14	Rate the laboratories & other IT facilities are excellent for effective learning (Related to Infrastructure and ambience of the institution)	1	4	2	0	0
15	Rate the infrastructure, cleanliness and other facilities in campus / canteen / common room / toilets / washrooms and maintenance (Related to Infrastructure and ambience of the institution)	3	3	0	1	0
16	Rate the sports (Indoor/Outdoor) facilities available and its maintenance (Related to Infrastructure and ambience of the institution)	4	1	2	0	0
17	Rate the security and proctorial services in college for students. (Related to Infrastructure and ambience of the institution)	3	2	1	1	0
18	Rate the resources and practices for conservation of energy, water, etc. in the campus (Related to Infrastructure and ambience of the institution)	6	1	0	0	0
19	Rate the usage of modern teaching aids, Gadget, Smart class room and Web resources for content delivery (Related to Infrastructure and ambience of the institution)	5	1	0	1	0
20	Rate the consistent maintenance of green campus (Related to Infrastructure and ambience of the institution)	7	0	0	0	0



B. Kalpana
PRINCIPAL
PRINCE SHRI VENKATESHWARA
ARTS AND SCIENCE COLLEGE
GOWRIVAKKAM, CHENNAI-600 073.



PRINCE SHRI VENKATESWARA ARTS AND SCIENCE COLLEGE

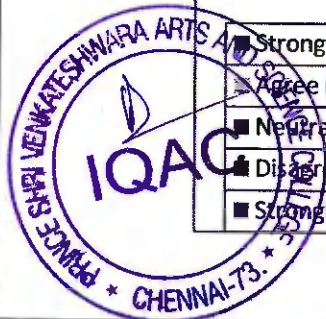
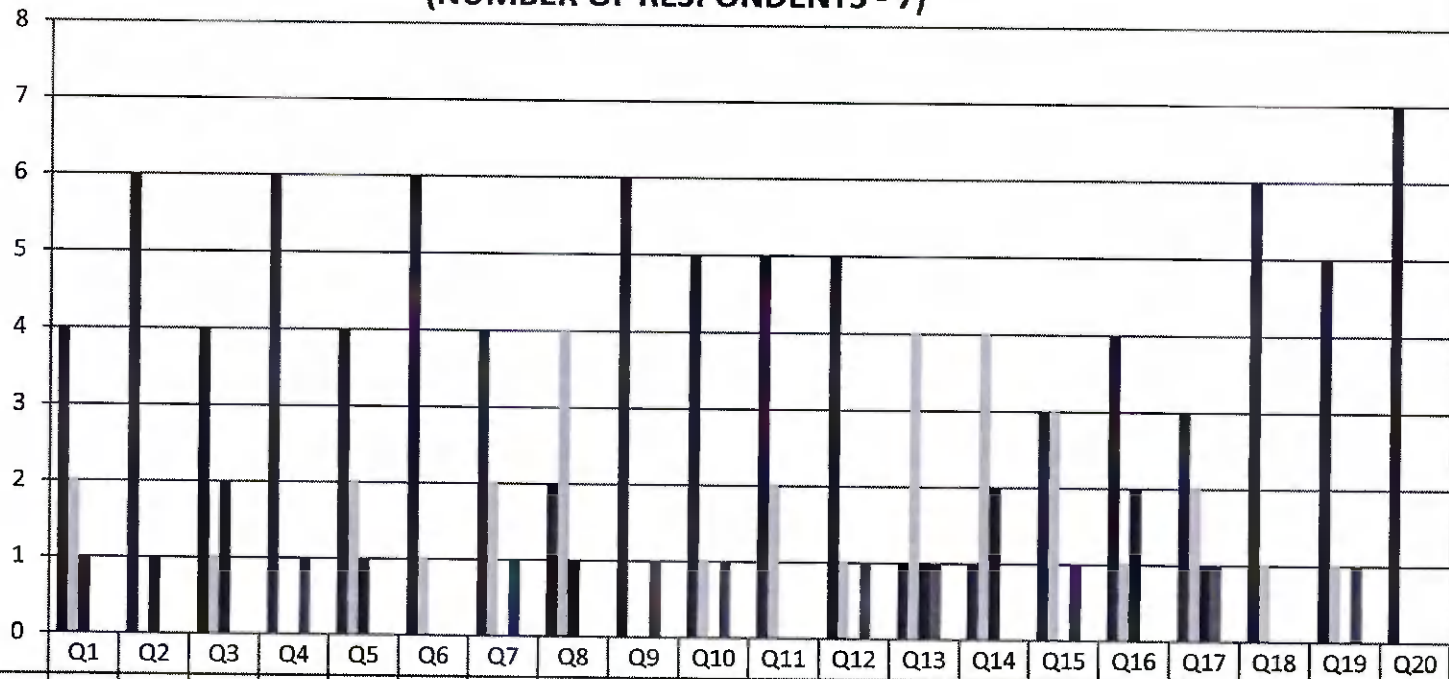
Gowrivakkam, Chennai-600073

Affiliated to University of Madras, ISO 9001:2015 Certified Institution

STUDENT FEEDBACK ON CURRICULUM, INFRASTRUCTURE FACILITIES & AMBIENCE OF THE INSTITUTION - 2020-2021

M.Sc. BIOTECHNOLOGY

(NUMBER OF RESPONDENTS - 7)



**PRINCE SHRI VENKATESHWARA
ARTS AND SCIENCE COLLEGE
GOWRIVAKKAM, CHENNAI-600 073**

B. Kalpana
PRINCIPAL



PRINCE SHRI VENKATESWARA ARTS AND SCIENCE COLLEGE

Gowrivakkam, Chennai-600073.

Affiliated to University of Madras, ISO 9001:2015 Certified Institution

9	Rate the way of Grievances/problems are redressed and resolved in time. (Related to Curriculum)	9	1	1	0	0
10	Rate the functioning of Placement Cell in getting jobs and placements (Related to Curriculum)	8	2	1	0	0
11	Rate the transparency of the evaluation system in the College and the internal evaluation process by the teachers (Related to Assessment)	9	1	1	0	0
12	Rate the PSVASC contributions on Entrepreneurship Development (Related to Ambience)	7	3	1	0	0
13	Rate the learning environment with adequate resources in Library (Related to Infrastructure)	9	2	0	0	0
14	Rate the laboratories & other IT facilities are excellent for effective learning (Related to Infrastructure and ambience of the institution)	8	2	1	0	0
15	Rate the infrastructure, cleanliness and other facilities in campus / canteen / common room / toilets / washrooms and maintenance (Related to Infrastructure and ambience of the institution)	9	1	1	0	0
16	Rate the sports (Indoor/Outdoor) facilities available and its maintenance (Related to Infrastructure and ambience of the institution)	8	1	2	0	0
17	Rate the security and proctorial services in college for students. (Related to Infrastructure and ambience of the institution)	8	1	1	1	0
18	Rate the resources and practices for conservation of energy, water, etc. in the campus (Related to Infrastructure and ambience of the institution)	9	1	1	0	0
19	Rate the usage of modern teaching aids, Gadget, Smart class room and Web resources for content delivery (Related to Infrastructure and ambience of the institution)	9	1	1	0	0
20	Rate the consistent maintenance of green campus (Related to Infrastructure and ambience of the institution)	7	3	1	0	0



B. Kalpana
PRINCIPAL

PRINCE SHRI VENKATESHWARA
ARTS AND SCIENCE COLLEGE
GOWRIVAKKAM - CHENNAI-600 073

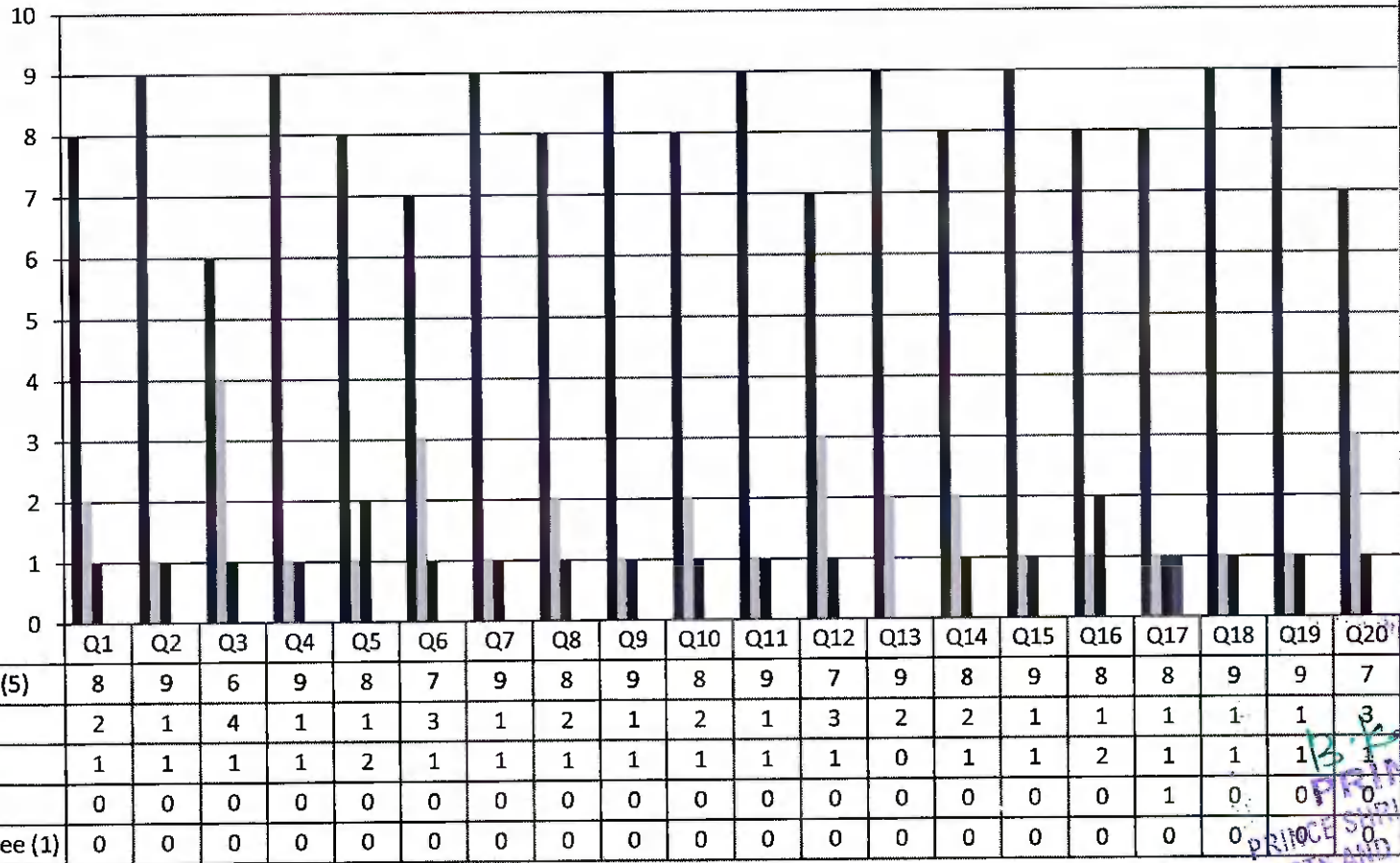


PRINCE SHRI VENKATESWARA ARTS AND SCIENCE COLLEGE

Gowrivakkam, Chennai-600073

Affiliated to University of Madras, ISO 9001:2015 Certified Institution

STUDENT FEEDBACK ON CURRICULUM, INFRASTRUCTURE FACILITIES & AMBIENCE OF THE INSTITUTION - 2020-2021
M.COM
 (NUMBER OF RESPONDENTS - 11)



B. K. Jagan
PRINCIPAL
 PRINCE SHRI VENKATESHWARA
 ARTS AND SCIENCE COLLEGE
 GOWRIVAKKAM, CHENNAI-600 073